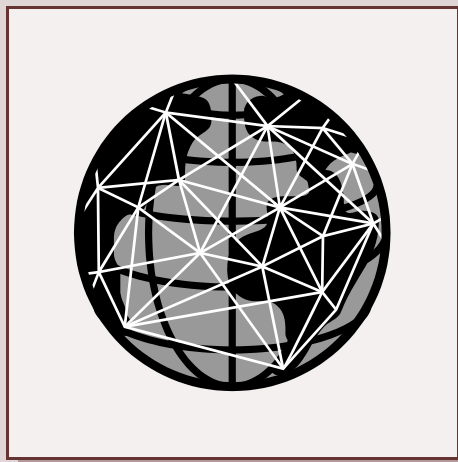


Access CHEPA

Annual Report 2001-2002



Centre for Health Economics and
Policy Analysis

January
2001

The Year in Brief

- Faculty member receives a prestigious Canada Research Chair Award.
- The first of two new faculty members is recruited. This addition is later complemented by the addition of a Research Associate and a Knowledge Transfer Associate to the Centre.
- Canadian Institutes of Health Research (CIHR) committees meet. CHEPA is well-represented with members affiliated with the Institute for Health Services and Policy Research Scientific Advisory Board, Health Policy and Systems Management Grant Review Committee, and the Psychosocial, Sociocultural & Behavioural Determinants of Health Grants Review Committee.
- The first of three CHEPA members is commissioned to submit a paper to the Royal Commission on the Future of Health Care in Canada. Papers written by CHEPA members address the role of public participation in health system decision-making, the influence of political elites on health care reform, and the growing costs of health care technology.
- CHEPA Working Papers, reports and publications are made available for downloading from the CHEPA website.
- CHEPA's Program in Policy Decision-Making launches its own website: www.researchtopolicy.ca.
- CHEPA fellowship recipient, Anita Kothari, of the Health Research Methodology Program, graduates.
- Brian Hutchison is appointed to a three-year term as Centre Director, starting July 2002.
- At year-end, the total value of current research grants held by CHEPA faculty or associates as Principal Investigators is \$7,177,703.

March
2002

Table of Contents

Who We Are

Centre

Mission 5

Organizational Chart 6

People

Director 7

Faculty 8

Staff 16

Advisory Council 16

Research

Goals 18

Working Papers 19

Publications 21

Table of Contents

Knowledge Transfer

Program	23
Workshop Series	24
Newsletter	25
Website	25
Seminar Series	26
Labelle Lectureship	27

Education

Courses	29
Activities	30
Student Awards	31



Who We Are

Centre



MISSION

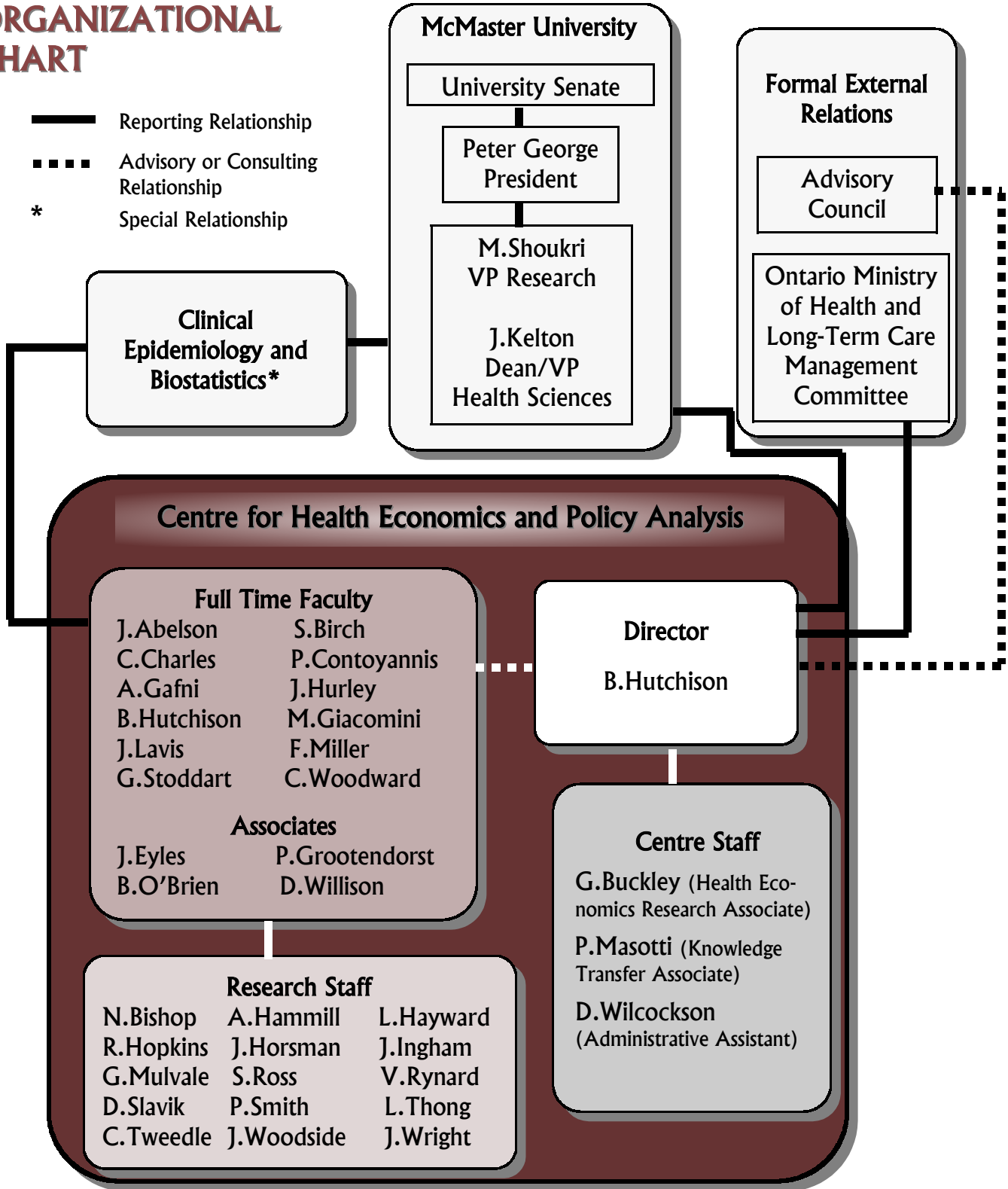
To promote a collegial and supportive interdisciplinary environment that fosters excellence in acquiring, producing and communicating socially-relevant knowledge in the fields of health economics and health policy analysis.



Centre

ORGANIZATIONAL CHART

- Reporting Relationship
- ■ ■ ■** Advisory or Consulting Relationship
- *** Special Relationship



People



DIRECTOR

The past year has been a period of growth and renewal for CHEPA. Our faculty and associates have continued to excel in obtaining external grants and career awards.

This success is exemplified by the more than 7 million dollars in grants held by CHEPA faculty and associates as Principal Investigators this year. In addition, we have increased our ability to deliver Ministry-responsive research, most recently illustrated by our two research products concerning the impact of new emerging genetic technologies on the health care system.

John Lavis received a prestigious Canada Research Chair Award in July 2001. This is a five-year, once-renewable award given to support “future research stars...acknowledged by their peers as having the potential to lead in their research fields.”

CHEPA has continued to strengthen linkages with other key stakeholder groups in Canadian health research. Eight of our faculty and associates are affiliated with CIHR Committees. As well, CHEPA’s John Lavis and Visiting Fellow Steve Morgan were this year’s Harkness Associates, representing Canada at briefings arranged by the Commonwealth Fund.

We have strengthened our capacity in education and training by recruiting two new faculty members, Fiona Miller and Paul Contoyannis, to the Centre.

In addition, we have recruited a new Knowledge Transfer Associate, Paul Masotti, to lead our innovative Knowledge Transfer (KT) Program.

Both the KT program and the newly established Program in Policy Decision-Making (PPD) have had successful years. The KT program hosted its third interactive workshop, *Continuity in Home Care*, and improved access to CHEPA research by making all newsletters, Working Papers, and workshop reports available on CHEPA’s website: www.chepa.org. PPD has also launched its own website, www.researchtopolicy.ca.

It was a pleasure to serve as Acting Director of CHEPA for 2001-2002 and I am delighted to announce that Dr. Brian Hutchison will be the new Centre Director for 2002-2005. Brian plans to build on the momentum developed over the year and broaden CHEPA’s research portfolio, increase and strengthen links with health systems and public policy-makers, recruit outstanding young faculty, and expand student and faculty access to data. The year ahead stands to be a challenging and rewarding year for CHEPA.

Sincerely,

Jerry Hurley

Acting Director 2001-2002

People

FACULTY



Julia Abelson, Ph.D.
abelsonj@mcmaster.ca

Julia Abelson is an Assistant Professor in the Department of Clinical Epidemiology and Biostatistics and a Member of CHEPA at McMaster University. She currently holds an Ontario Ministry of Health and Long-Term Care Career Scientist Award and is a founding board member of the Canadian Centre for Analysis of Regionalization and Health. She obtained her M.Sc. in Health Policy and Management from the Harvard School of Public Health and her doctorate in social and policy sciences at the University of Bath, U.K. Through her research, education and service activities, Dr. Abelson has worked closely with decision-makers at provincial, regional and local government levels.

Her research interests include:

- democratic participation in health policy and decision-making;
- development and evaluation of public involvement methods;
- governance, organization and funding of community care; and
- health policy analysis.



Stephen Birch, D.Phil.
birch@mcmaster.ca

Stephen Birch is a Professor in the Department of Clinical Epidemiology and Biostatistics and a Member of CHEPA at McMaster University. He is a previous recipient of both the Faculty of Health Sciences Rose Levy Rosenstadt Award and a research scholarship award under Health Canada's National Health Research and Development Program. He received his doctorate in economics at the University of York in the U.K. He is currently Senior Editor in health economics for *Social Science & Medicine*. He also holds Order-in-Council appointments on the Health Professions Regulatory Advisory Council of Ontario and Hamilton District Health Council.

His research interests include:

- economic evaluation;
- resource allocation; and
- population health.

People

Cathy Charles is an Associate Professor in the Department of Clinical Epidemiology & Biostatistics, a Member of CHEPA and an Associate Member of the Department of Sociology at McMaster University. She is also an Investigator in the Supportive Cancer Care Research Unit, which is co-sponsored by the Hamilton Regional Cancer Centre and McMaster University. She is an Honourary Research Associate in the Department of Behavioural Sciences, University of Sydney, Sydney, Australia. Cathy received a B.A. and M.A. in Sociology at the University of Toronto and a M. Phil. and Ph.D. in Socio-Medical Sciences from Columbia University.

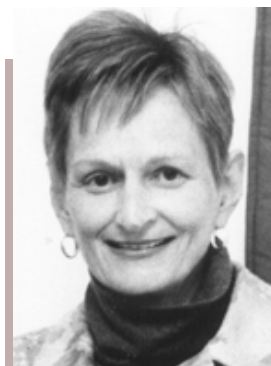
Her research interests include:

- shared treatment decision-making;
- physician-patient relationship;
- public participation in health care decision-making;
- research transfer; and
- social constructions of health/health care policy.

Paul Contoyannis joined McMaster as an Assistant Professor in February 2002. Prior to this he was a Research Fellow at the University of York, U.K. since 1999, working on two Economic and Social Research Council(ESRC) projects on the analysis of longitudinal health data. He obtained his Ph.D. in Economics, also from the University of York in 2000, which focused on the causes and consequences of inequalities in health, considering both theoretical and empirical issues relating to addiction, wages and income inequality.

His research interests include:

- health dynamics;
- determinants of health and health inequalities;
- simulation-based inference in microeconomic models; and
- models of addiction.



Cathy Charles, Ph.D.
charles@mcmaster.ca



Paul Contoyannis, D.Phil.
contoyp@mcmaster.ca

People



John Eyles, Ph.D.
eyles@mcmaster.ca

John Eyles is a social and policy scientist at McMaster University. He is a Fellow of the Royal Society of Canada. He is Director of the McMaster Institute of Environment and Health. He is also Professor of Geography and cross-appointed in the departments of Clinical Epidemiology and Biostatistics, Sociology, and CHEPA. He is author or co-author of some 200 books, peer-reviewed journal articles and technical reports in the health and social sciences fields. He has carried out work for national and provincial organizations and governments in Canada.

His research interests include:

- environment; and
- health and science policy.



Amiram Gafni, Ph.D.
gafni@mcmaster.ca

Amiram Gafni is a Professor in the Department of Clinical Epidemiology and Biostatistics and a Member of CHEPA. Dr. Gafni has worked on the development of the healthy-years equivalent (HYE) preference-based measure of outcome for programme evaluation and the development of a bedside decision instrument, as well as a method for helping patients to reveal their preferences regarding treatment.

His research interests include:

- economic evaluation (methods and application);
- decision boards; and
- modeling of consumers' and providers' behaviour (e.g. the physician-patient encounter).

People

Mita Giacomini is an Associate Professor in the Department of Clinical Epidemiology and Biostatistics at McMaster University. She currently holds a Canadian Institutes for Health Research / National Health and Development Program Scholar Award, as well as graduate degrees from the University of California in health services and policy analysis, the history of health sciences, and public health. She has authored many scholarly articles and reports on topics including health resource allocation and rationing, the politics of technology assessment, clinical uses of qualitative evidence, life support decision-making, demographic and psychosocial biases in health services, and financial incentives in the Canadian health system.

Her research interests include:

- social dimensions of technology innovation, assessment, and rationing;
- values in health policy and decision-making;
- health care organization and funding reform models; and
- methodology for policy analysis and case study research.

Paul Grootendorst holds a Ph.D. in economics from McMaster University, with fields in health economics and applied econometrics, and is currently a Member of the Centre for Evaluation of Medicines, and an Assistant Professor in the Department of Clinical Epidemiology and Biostatistics, McMaster University. He holds Associate Memberships in the Department of Economics and at CHEPA at McMaster.

His research interests include:

- econometric models of health care (especially pharmaceuticals) utilization;
- measurement and modeling of health; and
- program evaluation.

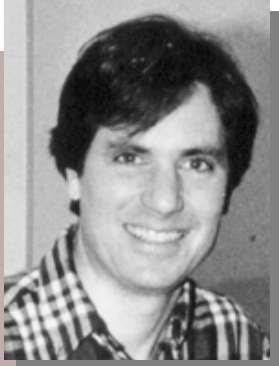


Mita Giacomini, Ph.D.
giacomini@mcmaster.ca



Paul Grootendorst, Ph.D.
grootend@mcmaster.ca

People



Jerry Hurley, Ph.D.
hurley@mcmaster.ca

Jerry Hurley is currently a Professor at CHEPA and in the Department of Economics, and an Associate Member of the Department of Clinical Epidemiology and Biostatistics, McMaster University. He served as the Associate Coordinator of CHEPA from 1994-1996, Coordinator from 1996-2000, and Acting Director in 2001-2002. He is currently a Member of the Conference Board of Canada's Executive Roundtable on Health and Wellness, the Canadian Institute for Health Information's National Health Expenditures Database Expert Group, the Ontario Ministry of Health's Community Equity Funding Formula Review Committee, and the Scientific Advisory Board of CIHR's Institute for Health Services and Policy Research.

His research interests include:

- health care financing;
- health care funding;
- normative economic analysis in the health sector;
- design of pharmacare programs and the utilization of pharmaceuticals; and
- resource allocation in the health sector.



Brian Hutchison, M.D. M.Sc.
hutchb@mcmaster.ca

Brian Hutchison is a Professor in the Departments of Family Medicine and Clinical Epidemiology and Biostatistics at McMaster University, Director of CHEPA, Co-Director of the Community Care Research Centre, McMaster Site Director for the Ontario Training Centre in Health Services and Policy Research, and Medical and Research Advisor to the Hamilton Community Care Access Centre. From 1994 to 1999, he held a National Research Scholar award from Health Canada. His principal educational activities are tutoring and thesis supervision in the graduate program in Health Research Methodology.

His research interests include:

- organization, funding and delivery of primary and community care;
- needs-based health care resource allocation and funding methods;
- provider payment methods; and
- preventive care.

People

John N. Lavis is the Canada Research Chair in Knowledge Transfer and Uptake, an Assistant Professor in the Department of Clinical Epidemiology and Biostatistics, and a Member of CHEPA at McMaster University. He is also the Liberty Health Scholar at the Canadian Institute for Advanced Research and a Scientist at the Institute for Work & Health. He directs the Program in Policy Decision-Making, a research program affiliated with CHEPA. He is the inaugural Chair of the Canadian Institutes of Health Research (CIHR) Health Policy and Systems Management grants review committee. He chairs the Task Force for Secure and Affordable Housing for People Living with HIV/AIDS. Dr. Lavis holds an M.D. from Queen's University, an M.Sc. from the London School of Economics, and a Ph.D. from Harvard University. He was one of two inaugural Canadian Associates of the Harkness Fellows Program (2001-2002).

His research interests include:

- knowledge transfer and uptake in public policy-making environments;
- politics and economics of health-care systems; and
- social determinants of health (especially the links between labour-market experiences and health) .

Fiona Miller is an Assistant Professor with the Department of Clinical Epidemiology and Biostatistics. She received her Ph.D. in History from York University and spent the 1999-2000 academic year as a Fulbright Visiting Researcher in the History and Sociology of Science Department at the University of Pennsylvania. In the 2000-2001 academic year she was a CHSRF/SSHRC Postdoctoral Fellow at CHEPA and Department of Clinical Epidemiology and Biostatistics, before being appointed to a faculty position.

Her research interests include:

- technology assessment;
- health system implications of genetics and biotechnology;
- health system risks and safety;
- history and philosophy of health science;
- sociology of ethics; and
- women's health.



John N. Lavis, M.D. Ph.D.
lavisj@mcmaster.ca



Fiona Miller, Ph.D.
millerf@mcmaster.ca

People



Bernie O'Brien, Ph.D.
obrienb@mcmaster.ca

Bernie O'Brien is a health economist by profession and received his bachelor's and master's degrees in Economics from the University of York (U.K.) and his Ph.D. (Economics) from Brunel University in London (U.K.) before moving to Canada in 1990. He is currently a Professor in the Department of Clinical Epidemiology and Biostatistics at McMaster University, Co-Director of the Centre for Evaluation of Medicines at St. Joseph's Hospital and an Associate of CHEPA at McMaster University. Dr. O'Brien was a recipient of a CIHR Senior Investigator Award for 2002-2007.

His research interests include:

- economic evaluation of health programs, particularly new medical technologies and pharmaceuticals in the context of clinical trials;
- methods for the assessment of health-related quality of life;
- clinical decision analysis;
- risk assessment methods for health care interventions; and
- pharmaceutical policy evaluation.



Greg Stoddart, Ph.D.
stoddart@mcmaster.ca

Greg Stoddart is a Professor in the Department of Clinical Epidemiology and Biostatistics, a Member of CHEPA and the founding Coordinator of the Centre, and an Associate Member of the Department of Economics. He is also a Fellow in the Population Health Program of the Canadian Institute for Advanced Research and one of the founders of the Program, as well as an External Associate of the Centre for Health Services and Policy Research at the University of British Columbia. He holds a Ph.D. in Economics from the University of British Columbia.

His research interests include:

- public-private mix in health care financing;
- social and economic determinants of health and health care utilization;
- development and application of conceptual frameworks for studies of health determinants;
- cross-sectoral resource allocation for health; and
- knowledge transfer to inform policy-making about health and health care.

People

Don Willison combines training in pharmacy (University of Toronto, 1977), clinical epidemiology and biostatistics (M.Sc., McMaster University, 1984), and health services research (Sc.D., Harvard School of Public Health, 1996). He works out of the Centre for Evaluation of Medicines at St. Joseph's Healthcare.

His research interests include:

- balancing cost-containment access to prescription pharmaceuticals with the promotion of R&D;
- effects of policies to restrict drug reimbursement on drug utilization, cost shifting to non-drug services and health outcomes;
- privacy and security enhancing technologies;
- public opinion on data privacy and health research; and
- the role and function of research ethics boards.



Don Willison, Sc.D.
willison@mcmaster.ca

Chris Woodward is a Professor in the Department of Clinical Epidemiology and Biostatistics, a Member of CHEPA, Associate Member of the Department of Psychiatry and Behavioural Neurosciences, and a Member of the Program for Educational Development in the Faculty of Health Sciences at McMaster. Her published work includes book chapters, monographs and articles on medical education, health human resource planning, quality of care assessment, utilization of medical services, survey research methods, the epidemiology of child psychiatric disorders and of school-based injuries, and women in medicine.

Her research interests include:

- evaluation of health care and education programs;
- work and health;
- survey research methods;
- health human resources; and
- primary and community health care.

Chris Woodward, Ph.D.
woodward@mcmaster.ca

People

STAFF

Centre Staff		Research Staff	
Gioia Buckley Health Economics Research Associate buckle@mcmaster.ca	Nancy Bishop	Gillian Mulvale	Cathey Tweedle
Paul Masotti Knowledge Transfer Research Associate pmasott@mcmaster.ca	Amanda Hammill	Suzanne Ross	Jennifer Woodside
Donna Wilcockson Administrative Assistant wilcocks@mcmaster.ca	Lynda Hayward	Vicki Rynard	Jane Wright
	Rob Hopkins	Donna Slavik	
	John Horsman	Patricia Smith	
	Julie Ingham	Liza Thong	

ADVISORY COUNCIL

Since the Centre was formed in 1988, the Advisory Council has been a valuable source of strategic advice for the Centre and its Director. Members of the Advisory Council for all, or part, of 2001-2002 include:

Guy Bujold
Deputy Commissioner
Fisheries and Oceans
Canada

Brad Graham
Director
Health Economics
Branch
MOHLTC

John Kelton
VP and Dean
Health Sciences
McMaster University

John Ronson
President
HealthLink
Clinical Data Network

William Coleman
Professor
Political Science
McMaster University

Brian Haynes
Chair
Clinical Epidemiology
and Biostatistics
McMaster University

**Mary Catherine
Lindberg**
Assistant Deputy Minister
Health Institutes and
Related Programs,
MOHLTC

Ronald Yamada
Senior Vice President
MDS Health Group Ltd.

Sheree Davis
Director
Corporate Policy Branch
MOHLTC

Jerry Hurley
Acting Director
CHEPA

Betty Muggah
Hamilton Community
Foundation

Cathy Fooks
Director
Health Network
CPRN

Sheila Jarvis
Chief Executive Officer
Bloorview MacMillan Centre

Marnie Paikin
Hamilton Community
Foundation



Research

Research



RESEARCH GOALS

- to develop and apply methods to evaluate the costs, risks, benefits, and utility of specific health interventions and of alternative allocations of health resources;
- to analyse and evaluate the effectiveness, efficiency and equity of systems of organization, governance, financing, funding, and delivery of health services;
- to develop, apply and evaluate methods for analysing the behaviour of the public, patients, providers, managers and other decision-makers in health systems;
- to develop, apply, and evaluate methods to convey health information to the public, patients, providers, managers, funders, and other decision-makers in health systems;
- to evaluate the role of health and social policy initiatives in addressing the determinants of, and alleviating inequalities in, the population's health.



Research

WORKING PAPERS

Featuring the research output of the faculty, associates, and staff of the Centre, this series provides a means to circulate polished, but not yet published, results of research efforts. The aim of these Working Papers is to stimulate discussion on analytical, methodological, and policy issues in health economics and health policy analysis.



01-01: Briggs A, Goeree R, Blackhouse G, O'Brien B. **Probabilistic Analysis of Cost-effectiveness Models: Choosing Between Treatment Strategies for Gastro-esophageal Reflux Disease.**

01-02: Furlong W, Feeny D, Torrance G, Barr R. **The Health Utilities Index (HUI®) System for Assessing Health-related Quality of Life in Clinical Studies.**

01-03: Abelson J, Forest P-G, Smith P, Eyles J, Martin E, Gauvin F-P. **Obtaining Public Input for Health Systems Decision-making: Past Experiences and Future Prospects.**

01-04: Abelson J, Forest P-G, Eyles J, Smith P, Martin E, Gauvin F-P. **Deliberations About Deliberative Methods: Issues in the Design and Evaluation of Public Consultation Processes.**

01-05: Ferrier S, Lavis J. **With Health Comes Work? People Living with HIV/AIDS Consider Returning to Work.**

01-06: Lavis J, Ross S, Hurley J, Hohenadel J, Stoddart G, Woodward C, Abelson J. **Examining the Role of Health-Services Research in Public Policy-Making.** *The Milbank Quarterly* 2002;80(1):125-154.

01-07: Hurley J. **Ethics, Economics, and Public Financing of Health Care.** *Journal of Medical Ethics* 2001;27:234-239.

01-08: Willison D, Wiktorowicz P, Grootendorst P, O'Brien B, Levine M, Deber R, Hurley J. **International Experience with Pharmaceutical Policy: Common Challenges and Lessons for Canada.**

01-09: Layton M, Woodward C. **Comparing Agencies' Reports of Consistency of Provider to be Achieved in Home Care Service Delivery Under Managed Competition: A Case Report From Ontario.**

01-10: Lavis JN, McLeod CB, Mustard CA, Stoddart GL. **Is There a Gradient In Life Span by Position in the Social Hierarchy?**

Research

WORKING PAPERS, CONTINUED

01-11: Hurley J. **Medical Savings Accounts in Publicly Financed Health Care Systems. What Do We Know?**

01-12: Hurley J. **Parallel Private Health Insurance in Australia: A Cautionary Tale and Lessons for Canada.**

01-13: McLeod CB, Lavis JN, Mustard CA, Stoddart GL. **Income Inequality, Household Income and Health Status in Canada: A Prospective Cohort Study.**

CHEPA PUBLICATIONS

These Working Papers, along with all 2002, 2000, 1999 and 1998 Working Papers are available online at www.chepa.org. Where a pdf of the Working Paper cannot be provided because the paper has been published, a hotlink is provided to the journal. All Working Papers circulated prior to 1998 can be ordered through chepa@mcmaster.ca

Research

FACULTY PUBLICATIONS



All faculty and associates' publications can be accessed via our searchable literature database at www.chepa.org. Our database contains all publications written by CHEPA faculty and associates from 1997 to the present. The database can be searched by author or by topic.

Database topics include:

MAJOR CATEGORY	SUB-CATEGORY
Financing/funding and remuneration	Private/public mix User charges/cost sharing
	Physician payment methods
	Population-based funding
Organization, delivery, and utilization of health care	Governance/organizational structures
	Primary and community care
	Providers of care
	Patient/consumer participation in decision-making
	Access to health care
	Preventive care
	Utilization
Economic methods, evaluation, and technology assessment	Methods
	Economic evaluation of pharmaceuticals
Health policy analysis	Knowledge transfer and uptake
	Public consultation in decision-making
Determinants of health	Frameworks
	Work and health
	Socio-economic status and health



Knowledge Transfer

Knowledge Transfer



PROGRAM

Over the last few years, knowledge transfer has evolved into an explicit function for many Canadian health research organizations, including CHEPA. CHEPA's John Lavis defines knowledge transfer as:



A process by which relevant research is made available and accessible for application in practice, planning and policy-making, preferably through interactive engagement with decision-makers and supported by both user-friendly materials and a communications strategy that enhances the credibility of the organization and, where relevant, reinforces key messages from the research.

In accordance with CHEPA's continuing dedication to support better decision-making by facilitating the transfer of research knowledge to decision-makers, the KT program strives to develop and apply knowledge transfer strategies that make knowledge accessible and useful to public policy makers, health system managers, researchers and other stakeholder groups.



For more information on CHEPA's Knowledge Transfer Program, please email Paul Masotti (Knowledge Transfer Associate) at pmasott@mcmaster.ca.



Knowledge Transfer

WORKSHOP SERIES

Each year, CHEPA initiates a series of highly interactive, invitational workshops, in which a small group of researchers and decision-makers meet to discuss research knowledge that has emerged in a particular policy domain. The workshop participants come from diverse backgrounds, with each contributing a somewhat different perspective to these stimulating and informative deliberations.



Continuity in Home Care Workshop

This Fall's workshop dealt with the issue of continuity in home care and focused on the following issues:

- what we mean when we refer to continuity of care in home care;
- the benefits of continuity as perceived by clients, case managers, service providers, and physicians;
- who needs continuity the most; and
- the effects of Ontario's competitive bidding process on continuity of care in home care.

The workshop was initiated to highlight key messages arising from a recently completed research project, entitled *Improving Continuity of Care in the Community for Home Care Clients*, funded by the Canadian Health Services Research Foundation and the Ontario Ministry of Health and Long-Term Care.

The workshop was designed to bring together public policy-makers, health system managers, researchers and other stakeholders with expertise and/or interest in continuity of care within home care. The workshop was organized to stimulate discussion on conceptual issues around continuity of care, as well as on barriers to and facilitators of continuity of care. In particular, workshop participants were asked to consider continuity of care within the context of home care and the introduction of managed competition. The discussion focused on work reported in two draft papers: *Managing Under Managed Community Care: The Experiences of Clients, Providers and Case Managers in One Ontario Community* (J. Abelson, S. Tedford, C. Woodward, B. Hutchison) and *Comparing Agencies' Reports of Consistency of Provider to be Achieved in Home Care Service Delivery Under Managed Competition: A Case Report from Ontario* (CHEPA Working Paper 01-09, M. Layton, C. Woodward).



A copy of the workshop report, *Continuity of Care in Home Care: Components, Current Issues and Future Prospects*, can be downloaded from www.chepa.org.

A published copy of the report can be purchased (\$5.00) by sending an email to cheпа@mcmaster.ca. For more information regarding the CHEPA Workshop Series, please contact Paul Masotti by email at pmasott@mcmaster.ca.



Knowledge Transfer

NEWSLETTER

CHEPA News is a quarterly newsletter, published by the Knowledge Transfer Program. Highlights of the newsletter include:

- abstracts of each new CHEPA Working Paper;
- spotlights on current CHEPA research projects, and how to access them;
- features on new research completed in the broader spectrum of Canadian health policy and economic research;
- information on Canadian conferences and awards; and
- notice of upcoming seminars and lectureships and of workshop reports.



In order to make the *CHEPA News* more accessible to our target audience, each issue will be placed on the website at www.chepa.org.

WEBSITE

The CHEPA website is located on the web at www.chepa.org and serves as a gateway to CHEPA research and activities. ***What can be found on the web?***



- *CHEPA News* and CHEPA Workshop Reports;
- all 2002 and 2001, 2000, 1999, 1998 Working Papers;
- a searchable literature database of all CHEPA faculty and associates' publications;
- advance notice of upcoming seminar series and lectureships;
- educational information and links to courses taught by CHEPA faculty and associates;
- information and application forms for Student Development Awards;
- contact information for faculty, associates and support staff; and
- links to other related sites.

Knowledge Transfer

SEMINAR SERIES

- ***Estimation of a Preference-Based Measure of Health from the SF-36***
~Dr. John Brazier
- ***The New Policy Processes in Health Canada***
~Dr. Phyllis Colvin
- ***Living on the Edge: The Experiences of Frail and Disabled Users of Home Care***
~Dr. Jane Aronson
- ***An International Comparison of Policies on Direct to Consumer Advertising of Prescription Only Drugs***
~Dr. Peter Mansfield
- ***McMaster Research Data Centre***
~Carl Bertoia
- ***M-THAC, From Medicare to Home and Community***
~ Dr. Raisa Deber
- ***Portfolio Investment in Health and the Need to Reinterpret Risk for the Economic Evaluation of Health Care Interventions***
~John Bridges
- ***Is There a Gap Between the Dissemination Strategies of Six Canadian HTA/HSR Agencies and the Expectations of Knowledge-Users in their Jurisdiction?***
~Pascale Lehoux

On the third Wednesday of each month during the academic year, CHEPA has an invited speaker present a seminar. The series attracts attention from a large audience, drawn from both the University and the wider community interested in health and health care issues.

During the 2001-2002 academic year, CHEPA hosted eight seminar speakers (see left). Advance notice of presentations are published in each issue of the CHEPA News (see page 27) and on the CHEPA website.



For more information regarding the CHEPA Seminar Series, please email Donna Wilcockson at wilcocks@mcmaster.ca.

Knowledge Transfer

LABELLE LECTURESHIP

Roberta Labelle was one of the Centre's founding members. Her death in 1991 was unexpected and occurred when broad recognition for her research in health economics was just starting to emerge. In memory of Roberta, CHEPA and the Department of Clinical Epidemiology and Biostatistics collaborated in establishing the Annual Labelle Lectureship Series. In the third week of October each year a health-services researcher with emerging recognition and an interdisciplinary approach to research gives a general interest lecture on a topic in the broadly defined areas of health economics and/or health policy. The Labelle Lecturer is also available for consultations with individuals in and outside McMaster University during the period of his or her visit. An endowment was established to ensure the ongoing funding of the Lectureship.

For Our Eyes Only: The Importance of Record Linkage in Health Research

Jean-Marie Berthelot, Manager of the Health Analysis and Modeling Group for Statistics Canada, was the 2001 Labelle Lecturer. His presentation provided an overview of health information needs and showed how record linkage can help to create comprehensive information systems that will benefit health research while maintaining patient confidentiality. He explained that the major issue surrounding record linkage is finding a balance between privacy and the public good. He noted that primary data collection is very expensive, yet vast amounts of administrative and survey data are underused. He provided examples of research questions that can only be addressed via record linkage. The presentation ended with an analysis of the future of record linkage, given the coming of "real-time" electronic patient records.



Listings of previous Labelle Lectureships and abstracts can be found on the web at www.chepa.org. Notice of upcoming lectureships are advertised through *CHEPA News* and on the web.



Education

Education



COURSES

Reflecting the commitment of its members to education and training, the Centre has maintained and strengthened its already substantial contributions to education in health economics and policy analysis at all levels.

Undergraduate

CHEPA faculty participate in undergraduate education in the faculties of economics and health sciences, as well as in undergraduate and postgraduate health professional training programs (MD, nursing, midwifery, physiotherapy, occupational therapy).



For more information on undergraduate courses and programs, please visit the McMaster

Undergraduate website at <http://registrar.mcmaster.ca/external/>

Graduate

CHEPA faculty participate as course co-ordinators and instructors, thesis supervisors and academic advisors to masters and doctoral students in the Health Research Methodology and Nursing graduate programs and in the MBA program's Health Services Management stream.



For more information on graduate courses and programs, please visit the McMaster Clinical Health Sciences Graduate Program website at: <http://prelude.mcmaster.ca/grad/index.htm>

Postgraduate

Steve Morgan was a Canadian Institutes of Health Research Postdoctoral Fellow who visited CHEPA for the 2001-2002 academic year as part of a three-year fellowship in Health Economics based at the Centre for Health Services and Policy Research at the University of British Columbia. Steve was also one of the 2001-2002 Canadian Associates of the Harkness Fellowship. His primary research interest lies in pharmaceutical policy. More specifically, while at CHEPA Steve's research projects have addressed the determinants of prescription drug spending, direct-to-consumer advertising for prescription drugs, drug patents and price regulation, and pharmaceutical insurance programs. Steve also taught two economics courses with Jerry Hurley.

Education

ACTIVITIES

Polinomics

Named after a quirky merging of the terms health policy and economics, Polinomics is a monthly seminar attended by individuals representing a wide range of disciplines from McMaster and outside universities and organizations. Individuals join for the academic year to present their work (grant proposals, papers ready for submission, etc.) and to provide written feedback to other participants.



For more information on Polinomics, please email Donna Wilcockson at wilcocks@mcmaster.ca.

Educational Initiative in Health Economics and Health Policy Analysis for Health Professionals

As part of CHEPA's goal to develop and implement a major educational initiative for training health professionals at McMaster, the Centre holds a number of seminars each year. The objective of this initiative is to ensure that all students enrolled in a health sciences discipline receive an introduction to basic concepts and tools from health economics and health policy analysis. These skills will assist in decisions about the content of clinical practice (e.g. economic evaluation of clinical services and clinical practice guidelines) and to understand the context within which they will practice.

In addition to student education, the Centre has also implemented a faculty development series in health economics and health policy analysis for Health Sciences faculty. The series has drawn faculty members from the medical, nursing, midwifery, physiotherapy and occupational therapy programs, as well as several postgraduate training programs.

For more information on these educational initiatives, please email John Lavis at lavisj@mcmaster.ca.



Education

STUDENT AWARDS

CHEPA Studentship

The Studentship Award provides McMaster University students who are enrolled in a graduate program and have an interest in health economics and/or health policy analysis with an opportunity to gain research experience and skills in an interdisciplinary environment. Students gain this exposure by either working on their own projects or on other ongoing projects run at the Centre or by its faculty. The amount of the award is \$8,000, consisting of a stipend of \$6,000 and up to \$2,000 for research expenses, books and travel to a conference to present research results, etc.

2001/2002 Academic Year Recipient

Kiran Pohar, a graduate student in the Health Research Methodology Program, completed a project entitled "Factors influencing cross-national price differentials." She completed her undergraduate degree in pharmacy and is interested in issues surrounding pharmaceutical policy. She has been accepted into law school, where she plans to specialize in intellectual property and patent law.

CHEPA Doctoral Fellowship

The CHEPA Doctoral Fellowship is intended to provide income support for graduate students enrolled in a Ph.D. program at McMaster University, whose field of research is health economics or health policy analysis. To be eligible, candidates must be entering their first year of doctoral study at McMaster, be supervised by a CHEPA faculty member, and be nominated by the Chair of their graduate program.

2001/2002 Academic Year Recipients

Vandna Bhatia's research involves the comparative study of reforms in the health insurance policies of Canada and Germany. In the fall, she travelled to Germany to complete the German component of the research at the Max Planck Institute for the Study of Societies and in the new year she completed the Canadian portion of the fieldwork and began writing.

Yuquian Rachel Lu entered the Ph.D. program in Economics this fall and specializes in health economics and public finance. She completed her Economics M.A. at Lakehead University where she undertook research on the determinants of provincial health care expenditures. While at McMaster, she plans to pursue further training in health economics and public finance.

Application forms and procedures for both awards are available at www.chepa.org.



Health Sciences Centre, 3H1 area
1200 Main Street West
Hamilton, ON, Canada
L8N 3Z5

Phone: 905-525-9140,
ext. 22122
Fax: 905-546-5211
Email: chepa@mcmaster.ca



CHEPA

Annual Report 2001-2002

Report designed and prepared by Riley Johnston

All graphics are copyright of Microsoft Design Gallery Live®.