



Centre for Health Economics and Policy Analysis

# Annual Report

2008-2009



<b>The Year In Brief</b> .....	2
<b>Who We Are</b>	
Introduction .....	4
Organizational Chart .....	5
Faculty .....	6
<b>Research</b>	
Ministry Responsive Research .....	10
Publications .....	11
Working Papers .....	12
<b>Knowledge Exchange</b>	
Program, Newsletter and Website .....	13
Seminar Series .....	14
<b>Education</b>	
Courses .....	15
Activities, CHEPA Fellowships .....	16

## The Year in Brief

### Infrastructure:

CHEPA received a substantial increase in its infrastructure funding from the Ontario Ministry of Health and Long-Term Care in 2008. The three-year \$2,491,000 grant allows CHEPA to expand its role in producing policy-relevant research and in building Ontario's applied health research capacity.

### Awards:

CHEPA member Phil DeCicca was awarded a 2008 John Charles Polanyi Prize in economics from the Ontario government. The \$20,000 awards are granted to outstanding researchers in the early stages of their careers. DeCicca is an assistant professor in the Department of Economics.

CHEPA emeritus member Brian Hutchison received the Lifetime Achievement Award in Family Medicine Research from the College of Family Physicians of Canada. The award honours individuals who have been trailblazers and leaders in family medicine research.

CHEPA doctoral students Emmanuel Guindon and Mike Wilson were each granted a Rising Star award from CIHR's Institute of Health Services and Policy Research, which recognizes excellence in Canadian research or knowledge translation carried out by graduate students and post-doctoral fellows. Guindon earned the award for his paper *A second look at pharmaceutical spending as determinants of health outcomes in Canada*, co-authored with CHEPA member Paul Contoyannis and published in *Health Economics*. Wilson's award recognizes his work on the PPD/CCNC database, an inventory of systematic reviews of the effects of alternative governance, financial and delivery arrangements within health systems.

CHEPA 2007/08 doctoral fellow Morgan Lim received a 2008 Joseph Armand Bombardier Canada Graduate Scholarship from Canada's Social Sciences and Humanities Research Council valued at \$105,000. She is pursuing doctoral research on reducing health care wait times in Ontario using discrete event simulations.

### Education and Capacity Building:

McMaster University's new Health Policy PhD program accepted its first students in September 2008. The interdisciplinary PhD program is training students in theory and empirical methods for framing, investigating and answering crucial questions about health policy and will prepare the field's future intellectual leaders. Under the direction of CHEPA member Mita Giacomini, the program enjoys a special relationship with CHEPA, which provides a dynamic and collegial environment for health policy education and scholarship.

A joint CHEPA-OMHLTC Health Policy Fellowship has been established, offering a health policy researcher the opportunity to lead and participate in a wide range of interdisciplinary, policy-relevant research and educational activities. A search is under way for a suitable candidate.

In addition to its doctoral fellowship, CHEPA now offers stipends to undergraduate and graduate students working on research and policy projects that are aligned with Ministry of Health priorities.

**Research Funding:**

CHEPA faculty continue to be successful in obtaining research grants from major funding organizations. During 2008/09, CHEPA members were awarded \$3.7 million as principal investigators on 15 new research projects, from organizations such as the Canadian Institutes of Health Research and the UK Biomedical Research Centre. They are also co-investigators or collaborators on 18 other new research projects announced during the year, and principal investigators on 39 ongoing research projects valued at \$3.05 million during 2008/09.

New funding awarded in 2008/09 includes:

- Julia Abelson is principal investigator on a \$281,000 CIHR-funded project entitled *Evaluating the Impacts of Public Engagement in Health Systems: A Comparative Research-Practice Collaboration*;
- John Lavis is co-investigator on the new Knowledge Translation Canada network, which has been awarded \$9.8 million from CIHR and \$2.4 million from the Canada Foundation for Innovation.
- Amiram Gafni is a collaborator on the \$3.7 million CIHR-funded CHIPS (Control of Hypertension in Pregnancy Study) Trial.

**Knowledge Exchange:**

CHEPA Director Julia Abelson has been working with personnel from the province's Local Health Integration Networks to help support their community engagement capacity. Abelson has also been collaborating with the Medical Advisory Secretariat and the Ontario Health Technology Advisory Committee over the past year to provide expert advice about the incorporation of public input into the MAS-OHTAC review process.

CHEPA member John Lavis led a series of one-day workshops to help those working in the Ontario Ministry of Health and Long-Term Care learn how to find and use research evidence efficiently, in order to improve the province's health system. About 100 ministry staff attended the workshops.

**Visiting Scholars:**

CHEPA was host to several visiting scholars during the 2008/09 academic year:

- Fadi El-Jardali, an assistant professor in the Faculty of Health Sciences at the American University of Beirut, was a visiting scholar with CHEPA and the McMaster Health Forum from February to May.
- Paul Dourgnon, a senior research fellow at the Institute for Research and Information in Health Economics in Paris, France, was a visiting researcher with CHEPA from September to December;
- Chantale Lessard, a doctoral student at the University of Montreal, spent the academic year at CHEPA to gain additional training in health economics.

**International Outreach:**

CHEPA's John Lavis is partnering with a leading advocate of advancing health research and policy in Africa in a new \$1-million project to study how to turn health research into policy in developing countries. Lavis and Nelson Sewankambo, principal of the College of Health Sciences at Makerere University in Uganda, will come together under the International Research Chairs Initiative, a cutting-edge project sponsored by Canada's International Development Research Centre in collaboration with the Canada Research Chairs Program.

# Mission

To promote a collegial and supportive interdisciplinary environment that fosters excellence in acquiring, producing and communicating socially relevant knowledge in the fields of health economics and health policy analysis.

CHEPA is a world-class interdisciplinary health research centre that informs decision-making at all levels of the health system. Based at McMaster University, it is home to the largest concentration of health economists and health policy analysts in Canada, with 17 faculty members from three faculties, two schools and six university departments.

CHEPA distinguishes itself from other Canadian health services and policy research centres by the breadth and depth of its expertise in the growing fields of health economics and health policy.

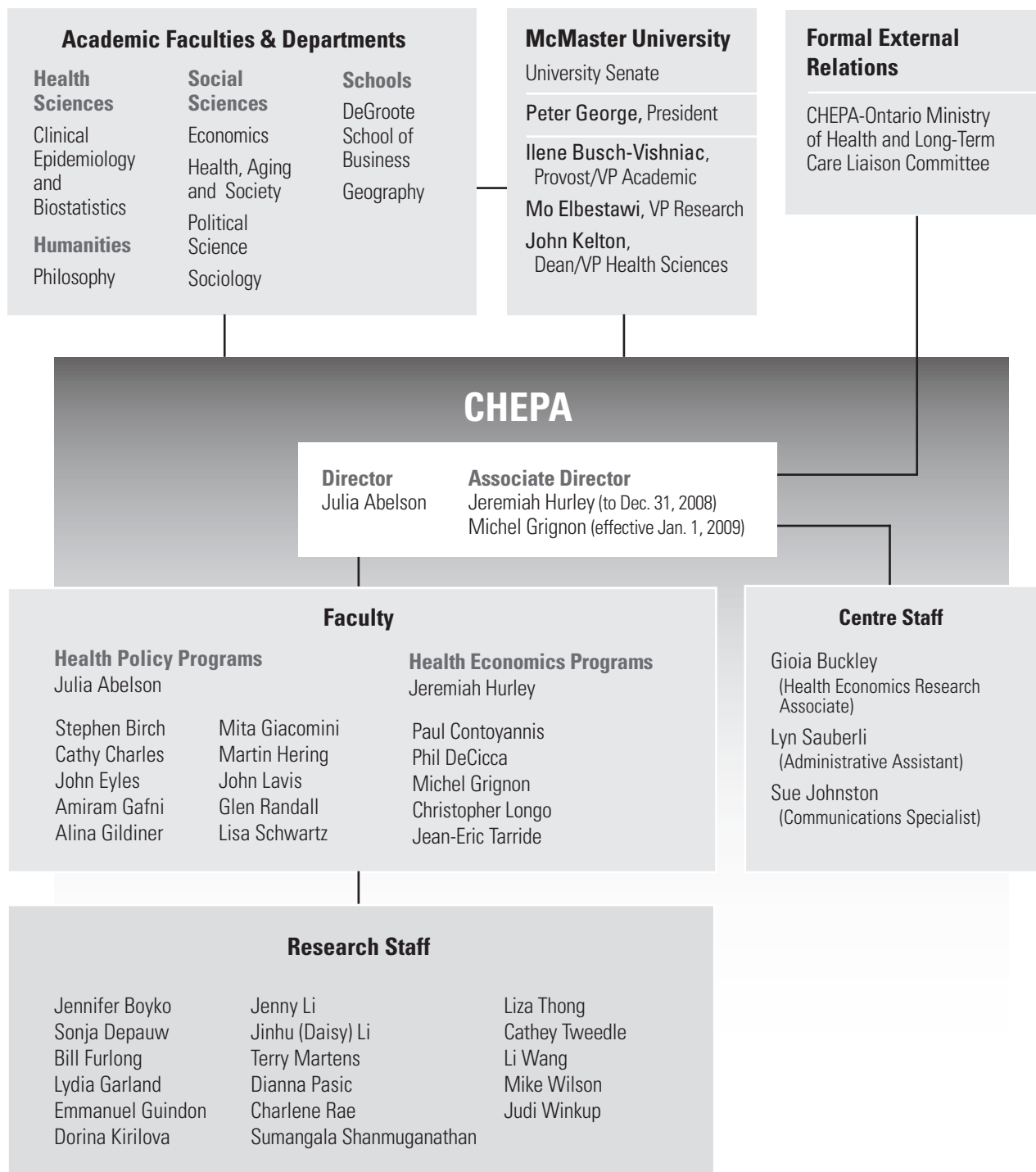
Its large talent pool of discipline-based and interdisciplinary researchers addresses a broad range of health, health care and health system problems through independent and collaborative research programs. Members lead research programs in many areas, including determinants of health and health inequalities, equity in health systems, health care financing and health human resources.

CHEPA researchers bring together a rich set of intellectual resources to tackle complex health and health care problems from a variety of perspectives such as economics, political science, ethics and sociology.

The centre has conducted pioneering work in the areas of knowledge transfer and exchange, economic evaluation and health technology assessment, and made notable contributions to health human resources, and needs-based and primary care funding models.

It also serves as an incubator for new graduate training programs in health policy, health economics and health services.

## Organizational Chart



— Reporting Relationship

## Faculty

**Julia Abelson** is Director of CHEPA, an associate professor in the Department of Clinical Epidemiology and Biostatistics and associate member of the Department of Political Science. She is a past holder of a Canadian Institutes of Health Research New Investigator Award and an Ontario Ministry of Health and Long-Term Care Career Scientist Award. Her research interests include democratic participation in health system governance; the evaluation of innovations in the organization, funding and delivery of health services; and the analysis of the determinants of health policy decision-making. Through her research, education and service activities, she works closely with decision-makers in provincial, regional and local governments.

**Stephen Birch** is a professor in the Department of Clinical Epidemiology and Biostatistics. His main research interests are in methods for economic evaluation of health interventions, equity in health care resource allocation and the relationship between health and environments. He is a former member of the Board of Directors for the Hamilton Niagara Haldimand Brant Local Health Integration Network, and has academic appointments in the School of Medicine at the University of Manchester, UK and the Centre for Health Economics Research and Evaluation at the University of Technology Sydney in Australia. He is a previous recipient of a research scholarship award under Health Canada's National Health Research and Development Program.

**Cathy Charles** is a professor in the Department of Clinical Epidemiology and Biostatistics. Her research interests include public and patient participation in health care and treatment decision-making, physician-patient communication, and the use of research information to improve decision-making in the clinical encounter. She is currently undertaking a variety of collaborative studies, both in Canada and internationally, on these issues in different clinical contexts. She is a member of the editorial boards of two international journals: Health Expectations and Patient Education and Counseling.

**Paul Contoyannis** is an associate professor in the Department of Economics. He has conducted research focused on the causes and consequences of inequalities in health, considering both theoretical and empirical issues relating to addiction, obesity and wage and income inequality. His main methodological interest is estimation and inference in complex microeconomic models. His research interests include health dynamics, determinants of health and health inequalities, the effects of childhood abuse on economic outcomes in adulthood, and the intergenerational transmission of income and health inequality.

**Phil DeCicca** is an assistant professor in the Department of Economics. He is interested in the impact of incentives in public policies and programs on individual behaviour. His work focuses on topics in health economics and labour economics and the intersection of the two fields. DeCicca's current work in health economics builds on an existing interest in the impact of excise taxes on smoking behaviour. He is involved in work on the relationship between economic conditions and health, as well as the existence and extent of competitive spillovers in public health insurance programs. His research interests also include child health and outcomes.

**John Eyles** is a social and policy scientist and holds the title of Distinguished University Professor at McMaster University. He is a Fellow of the Royal Society of Canada, a professor in the School of Geography and Earth Sciences, and an associate member of the departments of Clinical Epidemiology and Biostatistics and Sociology. He is author or co-author of about 300 books, peer-reviewed journal articles and technical reports in the health and social sciences fields. He has carried out work for national and provincial organizations and governments in Canada. His research interests include decision-making in health care systems and programs, the role of science and other factors in health and environment settings and access to health care resources.

**Amiram Gafni** is a professor in the Department of Clinical Epidemiology and Biostatistics and a research associate with the Research Institute for Quantitative Studies in Economics and Population, in the Faculty of Social Sciences at McMaster. His research interests are in the area of economic evaluation of health care programs (methods development and empirical applications), modelling of consumers' health-care behaviour, models of patient-physician decision-making, policy analysis and risk and decision analysis in health. His research has covered topics ranging from the care of premature babies to end of life care. He is involved in numerous ongoing research projects, examining subjects related to cardiovascular disease, hypertension, HIV/AIDS, breast cancer, complex continuing care and patient values.

**Mita Giacomini** is a professor in the Department of Clinical Epidemiology and Biostatistics and director of McMaster's new Health Policy PhD program. Her publications have addressed topics including health policy ethics, political reasoning in health technology assessment, health resource allocation, values in evaluation and policymaking, interdisciplinarity, and the clinical uses of qualitative evidence. Current research projects focus on health policy ethics, argumentation and evidence in health technology coverage decisions, values and ethics in Canadian health policy, and life support technologies in intensive care. She teaches in the areas of philosophy of science and health policy, and is a member of the Ontario Health Technology Assessment Committee.

**Alina Gildiner** is an assistant professor in the Department of Political Science and the Department of Health, Aging and Society. Her research interests focus on public-private change and the welfare state in historical-comparative analysis. Substantive areas of research to date have concerned privatization of rehabilitation in Ontario and of core health care in several Canadian provinces, and disability policy regimes in Europe. Other research interests include health and social policy, public and private insurance for health and disability and comparative public policy. She formerly held a Post-Doctoral Award with the Social Sciences and Humanities Research Council of Canada, and the Mustard Award from the Institute for Work & Health in Toronto.

**Michel Grignon** is an associate professor in the Department of Economics and the Department of Health, Aging and Society, and an adjunct scientist at the Institute for Health Economics in Paris, France. Grignon has extensive experience at an international level in research projects and activities in the areas of health economics, health-related policies, health insurance and aging. His current research projects cover a broad range of topics, including equity in health care utilization and how age influences health care utilization in Canada. His research interests also include the study of private health insurance, from the determinants of demand for private insurance to its impact on health services utilization.

**Martin Hering** is an assistant professor in the Department of Political Science and the Department of Health, Aging and Society. He studies the development of welfare states and the politics of welfare state reform, and is particularly interested in analysing stability and change in the two largest social programs in advanced industrialized countries: health care and pensions. He seeks to understand why health care systems are more resistant to fundamental change than pension systems and how policymakers' ideas about health care shape policy alternatives. His current research focuses on policy drift in the Canadian health care system and on policy initiatives of provincial governments that either reinforce or reduce inequities in health care utilization.

**Jeremiah Hurley** is the Associate Director of CHEPA, a professor in the Department of Economics and an associate member of the Department of Clinical Epidemiology and Biostatistics. He has conducted research on physician behaviour and physician payment systems, resource allocation and funding models for health care, financial incentives in health care and prescription drug programs. His current work focuses on public and private roles in health care financing, resource allocation and equity in health care, and the application of experimental economic methods in health research. He has published in leading health economic and health services research journals and has acted as a consultant to regional, provincial, national and international agencies.

**John Lavis** is the Canada Research Chair in Knowledge Transfer and Exchange, a professor in the Department of Clinical Epidemiology and Biostatistics, and an associate member of the Department of Political Science. He is also a research associate with the European Observatory on Health Systems and Policies. His principal research interests include knowledge transfer and exchange in public policymaking environments and the politics of health care systems. He directs the Program in Policy Decision-Making, a research program affiliated with CHEPA. He is President of the Pan American Health Organization Advisory Committee on Health Research, and a member of the Advisory Committee on Health Research for the World Health Organization.

**Christopher J. Longo** is an assistant professor in the DeGroot School of Business. He has 16 years of industry experience in clinical research, economic evaluation and market access strategies for pharmaceuticals. He has published both clinical and economic research in a number of therapeutic areas including diabetes, cancer, sepsis and central nervous system disorders. His research interests include the economic and quality of life evaluation of pharmaceuticals in critical and chronic illnesses, global pharmaceutical pricing strategies, the public/private mix in the financing of health care, the evaluation of factors influencing patients' financial burden for health care services, and barriers and facilitators to healthy behaviour in chronic illnesses.

**Glen E. Randall** is an associate professor in the DeGroot School of Business. He has more than 20 years of experience working with leaders in government, regulatory agencies and health care organizations. His current research includes an assessment of recent reforms to the delivery of home care services in Ontario and the impact of these reforms on the autonomy of health professionals. He is also the principal investigator of a study investigating the evolution of mental health policy in Ontario as services shift from institutionally-based to community-based delivery. Other research interests include the impact of health care restructuring on health professionals and resource allocation and priority setting in health care.

**Lisa Schwartz** is an associate professor in the Department of Clinical Epidemiology and Biostatistics and an associate member in the Department of Philosophy. She holds the Arnold L. Johnson Chair in Health Care Ethics at McMaster University, and is a founding member of the Ontario Cancer Research Ethics Board. Schwartz has led workshops to build faculty and staff knowledge in health ethics. Her research interests include ethics in health care education, research ethics, global health, privacy and access to biosamples, patient advocacy and measurement and effectiveness of ethics education. She is the Principal Investigator on a CIHR-funded study examining the ethical challenges faced by health care professionals providing humanitarian assistance abroad.

**Jean-Eric Tarride** is an assistant professor in the Department of Clinical Epidemiology and Biostatistics, and an associate member in the Department of Economics. He is also an investigator with the Program for Assessment of Technology in Health, a member of both the Centre for Evaluation of Medicines and the Father Sean O'Sullivan Research Centre at St. Joseph's Healthcare, and holds a Career Scientist Award from the Ontario Ministry of Health and Long-Term Care. His primary research interests are in methods for the economic evaluation of health technologies, and treatment of uncertainty in health technology assessments (HTAs) and the decision-making process. Other areas of research include the longitudinal analysis of healthcare utilization data and the valuation of indirect costs in HTAs.

## Ministry Responsive Research

CHEPA researchers play a key role in work to inform the Ontario Ministry of Health and Long-Term Care on health system management and policy priorities.

In 2008, CHEPA submitted three final reports on Ministry Responsive Research projects.

*Needs-adjusted Primary Care Capitation:* This project stimulated discussions at the most recent round of negotiations between the OMHLTC and the Ontario Medical Association in 2008 to come to a new agreement regulating physician payment from 2008 to 2012. As a result of these discussions, the 2008-2012 Physician Service Agreement states that a review “of the current capitation methodology payments, possibly to incorporate the burden of illness of patients” will take place. Results from this research were also used for Health Care Connect, a ministry program that aims to help Ontarians without a family doctor to find one. The project’s work on identifying factors influencing the need for primary care services helped the ministry to formulate the set of questions asked by Health Care Connect nurses in order to prioritize patients’ needs for primary health care services.

*Advancing Community-Based Collaborative Mental Health Care through Interdisciplinary Family Health Teams in Ontario:* This project examined how the emergence of Family Health Teams influence the mix of quality and providers of collaborative mental health care. The findings inform policymakers of opportunities to further develop this model of mental health care delivery.

*After-hours Information Given by Telephone by Family Physicians in Ontario:* This study examined the options for after-hours care provided when patients telephone family physician offices, particularly with respect to access to the nurse-staffed Telephone Health Advisory Service (THAS) and to on-call family physicians.

CHEPA also continued work on two other Ministry Responsive Research projects during 2008/09:

*Primary Care Physician Responses to Payment Incentives* is analysing the impact of selected changes in primary care physician payment on the delivery of services by family doctors in Ontario.

*Primary Care Needs of Rural and Northern Group Agreement (RNPGA) Practice Populations* will assess the current funding method for RNPAs – a primary care model providing a global payment to groups of physicians in several rural or northern communities – and compare it to potential alternative methods of payment.

## Publications

Research conducted by CHEPA members and staff covers an extensive range of topics and is reported in a variety of online and print publications that deal with health economics, health policy and health treatments and care. In 2008, researchers affiliated with CHEPA produced or contributed to 136 publications, including articles in scholarly periodicals, book chapters, reports and working papers. Ninety of the publications appeared in peer-reviewed journals, and CHEPA faculty and staff were primary authors on 64 items.

Examples of work published by CHEPA researchers in 2008/09 include:

Abelson J, Miller FA, Giacomini M. *What does it mean to trust a health system? A qualitative study of Canadian health care values*. Health Policy. December, 2008. (E-published).

Charles CA, Gafni A, Whelan, T. *Treatment Decision Making in the Medical Encounter: The Case of Shared Decision Making*. In Higgs J, Jones M, Loftus S, Christensen N (Eds). *Clinical Reasoning in the Health Professions* (3rd edition). Elsevier 2008.

DeCicca P, Kenkel D, Mathios A. *Cigarette taxes and the transition from youth to adult smoking: Smoking initiation, cessation, and participation*. Journal of Health Economics. July, 2008; 27(4): 904-917

Eyles J, Robinson K, Elliott S. *An epistemic community comes and goes? Local and national expressions of heart health promotion in Canada*. BMC Health Services Research. February, 2009; 9:35.

Giacomini M, Kenny N, DeJean D. *Ethics frameworks in Canadian health policies: Foundation, scaffolding, or window dressing?* Health Policy. January, 2009; 89(1): 58-71.

Hurley, J, Pasic D, Lavis J, Mustard C, Culyer AJ, Gnam W. *Parallel lines do intersect: Interactions between the workers' compensation and provincial publicly financed health care systems in Canada*. Healthcare Policy. 2008. 3(4): 100-112.

Lewin S, Lavis JN, Oxman AD, Bastías G, Chopra M, Ciapponi A, Flottorp S, Martí SG, Pantoja T, Rada G, Souza N, Treweek S, Wiysonge CS, Haines A. *Supporting the delivery of cost-effective interventions in primary health-care systems in low-income and middle-income countries: an overview of systematic reviews*. The Lancet. September 13, 2008; 372 (9642): 928-39. Review.

Longo CJ, Heyland DK, Fisher HN, Fowler RA, Martin CM, Day AG. *A long-term follow-up study investigating health-related quality of life and resource use in survivors of severe sepsis: comparison of recombinant human activated protein C with standard care*. Critical Care. October 16, 2008; 12(5): 429.

Randall GE, Kindiak DH. *Deprofessionalization or postprofessionalization? Reflections on the state of social work as a profession*. Social Work in Health Care. 2008; 47(4): 341-54.

Tarride JE, Lim ME, Bowen JM, McCarron CE, Blackhouse G, Hopkins R, O'Reilly D, Xie F, Goeree R. *In search of the evidentiary foundation of published Canadian economic evaluations (2001-06)*. International Journal of Technology Assessment in Health Care. Spring, 2009; 25(2): 214-21.

## Working Papers

CHEPA research can also be published as Working Papers on the CHEPA website ([www.chepa.org/Research-Products/Working-Papers](http://www.chepa.org/Research-Products/Working-Papers)). The aim of the Working Papers is to stimulate discussion on analytical, methodological and policy issues in health economics and health policy analysis.

The most recent Working Papers are:

08-03: Hurley J, Grignon M, Wand L, McGrath T.

*Geographic equity in hospital utilization: Canadian evidence using a concentration-index approach*

08-04: Hurley J, Guindon, E.

*Private health insurance in Canada*

08-05: Grignon M, Hurley J, Wang L, Allin S.

*Inequity in a market-based health system: Evidence from Canada's dental sector*

08-06: Abelson J, Giacomini M, Lavis J, Eyles J.

*Field of dreams: Strengthening health policy scholarship in Canada*

09-01: Hurley J, Buckley N, Cuff K, Giacomini M, Cameron D.

*Preferences of the fair division of goods: Information, good, and sample effects in a health context*

09-02: Giacomini M.

*Theory based medicine and the role of evidence: Why the emperor needs new clothes, again*

09-03: Longo, C. Grignon, M.

*The value of fixed-reimbursement healthcare insurance - evidence from cancer patients in Ontario, Canada*

09-04: McDonald, H.

*Criteria for evaluating the quality of decision aids: A critical appraisal of the IPDAS presentation of probabilities domain*

## Knowledge Exchange Program

The Knowledge Exchange Program involves various strategies to ensure knowledge generated by or relevant to the goals of CHEPA researchers is effectively communicated to health system decision makers and other stakeholders. Members organize and take part in workshops, briefings and invitational exchanges with decision makers and researchers on a variety of policy relevant topics, and work to ensure research is available and accessible in user-friendly formats.

An example of these types of initiatives was a series of workshops held during 2008/09 and led by CHEPA member John Lavis, who also oversees CHEPA's Knowledge Exchange Program. The workshops helped participants increase their awareness about tools and resources available to health system managers and policymakers in order to support their use of research evidence.

The Centre also organizes regular seminars on topics related to health economics and policy analysis, and offers web-based and print publications that provide information on CHEPA activities, research and accomplishments.

## Website and Newsletter

A redesigned CHEPA website ([www.chepa.org](http://www.chepa.org)) was launched early in 2009. The expanded information on research, education, publications and presentations provides an overview of the mandate and progress of the Centre. The site includes a searchable literature database, current to 2008, of all publications by CHEPA members, as well as a Working Papers section.

Faculty profiles, information and application forms for student awards, the annual Year in Review publication detailing highlights of CHEPA's achievements and annual reports are also available on the site.

The website receives an average of 1,300 visits a month, with an average of 5,000 page views per month.

An electronic newsletter that highlights CHEPA activities and developments is published three times a year, and distributed to about 800 people. You can view the newsletters on the website, or sign up to have it sent to your inbox at [www.chepa.org/Knowledge-Exchange/Products/CHEPA-News](http://www.chepa.org/Knowledge-Exchange/Products/CHEPA-News).

## Seminar Series

CHEPA's seminar series is a forum for invited speakers, usually from universities or research centres outside of McMaster University, to present research on a wide range of health care, health economics and health policy topics. The seminars are generally held once a month, on the third Wednesday. Notice of the presentations is published on the CHEPA website.

### 2008-2009 Seminar Series Speakers

#### Clinical Geography: Nursing practice and the remaking of institutional space

Gavin Andrews, Chair, Department of Health, Aging and Society, McMaster University

#### An American in Canada: The journey to a study of long-term care policy and administration in Ontario

Cynthia Mara, Associate Professor of Health Care Administration and Policy, Penn State University, Harrisburg

#### Did the 2004/06 French gate-keeping reform lead patients to reduce their use of specialist care for economic reasons? An assessment of the reform using self assessed unmet need

Paul Dourgnon, Senior Research Fellow, Institute for Research and Information in Health Economics, Paris, France

#### Research evidence in the federal policy process: A wait times case study

Kathryn McDade, Director General, Health Care Policy Directorate, Health Canada

#### Policy relevant research priorities as identified by policymakers, researchers and representatives of the non-state sector: The outcomes and lessons learned from a nine-country study in the Middle East and North Africa region

Fadi El-Jardali, PhD, Assistant Professor, American University of Beirut

#### The effect of deceptive advertising on consumption: The case of over-the-counter weight loss products

John Cawley, PhD, Associate Professor, Department of Policy Analysis and Management, Cornell University, N.Y.

#### Estimating lifetime or episode-of-illness costs

Willard G. Manning, PhD, Professor, the Harris School of Public Policy Studies and Department of Health Studies, University of Chicago

#### Qualitative research on health care disparities: Contributions from institutional ethnography

Christina Sinding, PhD, Associate Professor, School of Social Work and Department of Health, Aging and Society, McMaster University

#### Toward a better understanding of the role of health economic evaluation in family practice: philosophical, theoretical and methodological innovations, and empirical findings

Chantale Lessard, Visiting PhD in Public Health student from the University of Montreal

## Courses

Education and training are core functions within CHEPA. In 2008/09, CHEPA faculty members taught several undergraduate and graduate courses related to health economics and policy analysis. They also supervised and mentored 31 graduate students. Their expertise crosses several departments in the Faculty of Health Sciences, the Faculty of Social Sciences and the DeGroot School of Business at McMaster University.

### Undergraduate

Examples of undergraduate courses taught by CHEPA faculty:

- HTH SCI 3GG3 Health Systems and Health Policy
- ECON 2CC3/HEALTHST 2C03 Health Economics and Policy
- ECON 3Q03 Economics of Aging
- GERONTOL 4S03 Social Policy and the Aging Population
- HEALTHST 1A03 Introduction to Health Studies

For more information on undergraduate courses and programs taught by CHEPA faculty, visit the McMaster Undergraduate website at <http://registrar.mcmaster.ca/future/publications>.

### Graduate

Examples of graduate courses taught by CHEPA faculty:

- BUS C711 Health Economics and Evaluation
- HRM 737 Economic Analysis for the Evaluation of Health Services
- HRM 738 Health Policy Analysis
- HRM 740 Advanced Decision Analysis in Health Technology Assessment
- ECON 795 Analysis of Health Data
- POL SCI 702 Social Policy Transformations

For more information on graduate courses and programs, visit [www.mcmaster.ca/graduate/](http://www.mcmaster.ca/graduate/).

### Health Policy PhD

CHEPA also provides an intellectual home to McMaster University's Health Policy PhD program. CHEPA member Mita Giacomini led the development and is director of this program which is unique in Canada. The program admitted its first students in September 2008. This full-time four-year PhD program prepares graduates for academic appointments in interdisciplinary, health science or public policy settings or for leadership positions in government, consulting, non-governmental organizations or private industry. For more information on this program, visit [www.fhs.mcmaster.ca/hpphd](http://www.fhs.mcmaster.ca/hpphd).

## Activities

### Polinomics

Polinomics – a merging of the terms policy and economics – is a monthly seminar series that provides CHEPA members and others working or studying in the area of health economics and health policy analysis the opportunity to present work such as research papers that have not yet been published, or proposals for grants. A broad range of topics attracts individuals representing various disciplines. The seminars take place on the first Wednesday of the month.

## CHEPA Fellowship

The CHEPA Doctoral Fellowship provides income support for graduate students enrolled in a PhD program at McMaster University, whose field of research is health economics or health policy analysis. Candidates must be entering their first year of doctoral study, and be supervised by a CHEPA faculty member. The award carries an annual stipend of up to \$20,000. For details on how to apply, visit [www.cheпа.org/Education/Fellowship-Guidelines](http://www.cheпа.org/Education/Fellowship-Guidelines).

### 2008/2009 Academic Year Doctoral Fellowship

Andrea Smith is among the first students to enrol in McMaster University's new Health Policy PhD program. She is pursuing research into the importance of considering ethical, social and policy implications of environmental and public health research. Through her research program she is addressing the disjuncture between research and practice in the field of environmental and public health, with particular emphasis on how values are introduced in health policy through evidence. Smith plans to conduct an ethical and philosophical analysis of the connections between research methods and environmental and public health policy. Smith has a Bachelor's degree from St. Thomas University in Fredericton, and a Master's degree in community health and epidemiology from Dalhousie University in Halifax. She previously studied at McMaster in the Health Research Methodology graduate program. She is being supervised by CHEPA member Mita Giacomini, professor in the Department of Clinical Epidemiology and Biostatistics.

# CHILDREN'S





**HSC-3H1, McMaster University,  
1200 Main Street West,  
Hamilton, ON, Canada  
L8N 3Z5**

**T: 1-905-525-9140, ext. 22122  
F: 1-905-546-5211**

**[chepa@mcmaster.ca](mailto:chepa@mcmaster.ca)  
[www.chepa.org](http://www.chepa.org)**

---