



Centre for Health Economics
and Policy Analysis

2005-2006
ANNUAL REPORT

- CHEPA member Julia Abelson was named a 2005-2006 Commonwealth Fund Harkness Associate in Health Care Policy.
- Brian Hutchison, who was director of CHEPA for three years, retired in July, but remains active in several research projects.
- Ron Goeree, acting director of the Program for Assessment of Technology in Health, was named an Associate Member of CHEPA. He is an assistant professor in the Department of Clinical Epidemiology and Biostatistics, and his research interests include health technology assessment, applied economic evaluation and outcome measurement and valuation for public/private decision-making.
- CHEPA was a sponsor of the Health Human Resources conference of the Canadian Employment Research Forum. Several CHEPA investigators made presentations or served as facilitators at the conference.
- CHEPA research was showcased at the 5th World Congress of the International Health Economics Association held in Barcelona.
- A draft report on a research project entitled Economic Evaluation of Alternative Enrolment Methods for Primary Care Practices, was presented to the Ministry of Health and Long Term Care.
- A Working Paper was produced for a project commissioned by the Canadian Medical Association that examined whether economic evidence of the effectiveness of preventive health care interventions can play a role in priority setting for public health care.
- Associate member Ivy Bourgeault completed a pilot study examining the demographics and policy contexts around the migration of physicians, nurses, midwives and psychologists.
- The findings of a CHEPA research project that examined the relationship between the need for public health and the per capita funding of public health units were cited in a report to the Public Health Funding sub-committee of the Ontario government's Capacity Review Committee.
- CHEPA Faculty members continued to be very successful in external grant competitions in 2005, receiving more than \$600,000 as principal investigators on grants from Canadian Institutes of Health Research, Canadian Health Services Research Foundation and the Social Sciences and Humanities Research Council.
- G. Emmanuel Guindon and Amanda Hammill were the recipients of CHEPA's doctoral fellowship for the 2005-2006 academic year.
- Patricia Khoker was CHEPA's studentship recipient for the 2005-2006 academic year.

For details on these and other Centre activities please refer to this annual report, CHEPA Year In Review 2005, or visit the website at www.cheпа.org.

The Year In Brief	1
Table of Contents	2
Who We Are	
Mission, Goals	4
Organizational Chart	5
Faculty	6
Advisory Council	10
Research	
Working Papers and Publications	12
Ministry Responsive Research	13
Knowledge Exchange	
Program, Newsletter and Website	15
Seminar Series	16
Labelle Lectureship	17
Education	
Courses and Activities	19
Awards and Fellowships	20

Who We Are



Mission

To promote a collegial and supportive interdisciplinary environment that fosters excellence in acquiring, producing and communicating socially-relevant knowledge in the fields of health economics and health policy analysis.

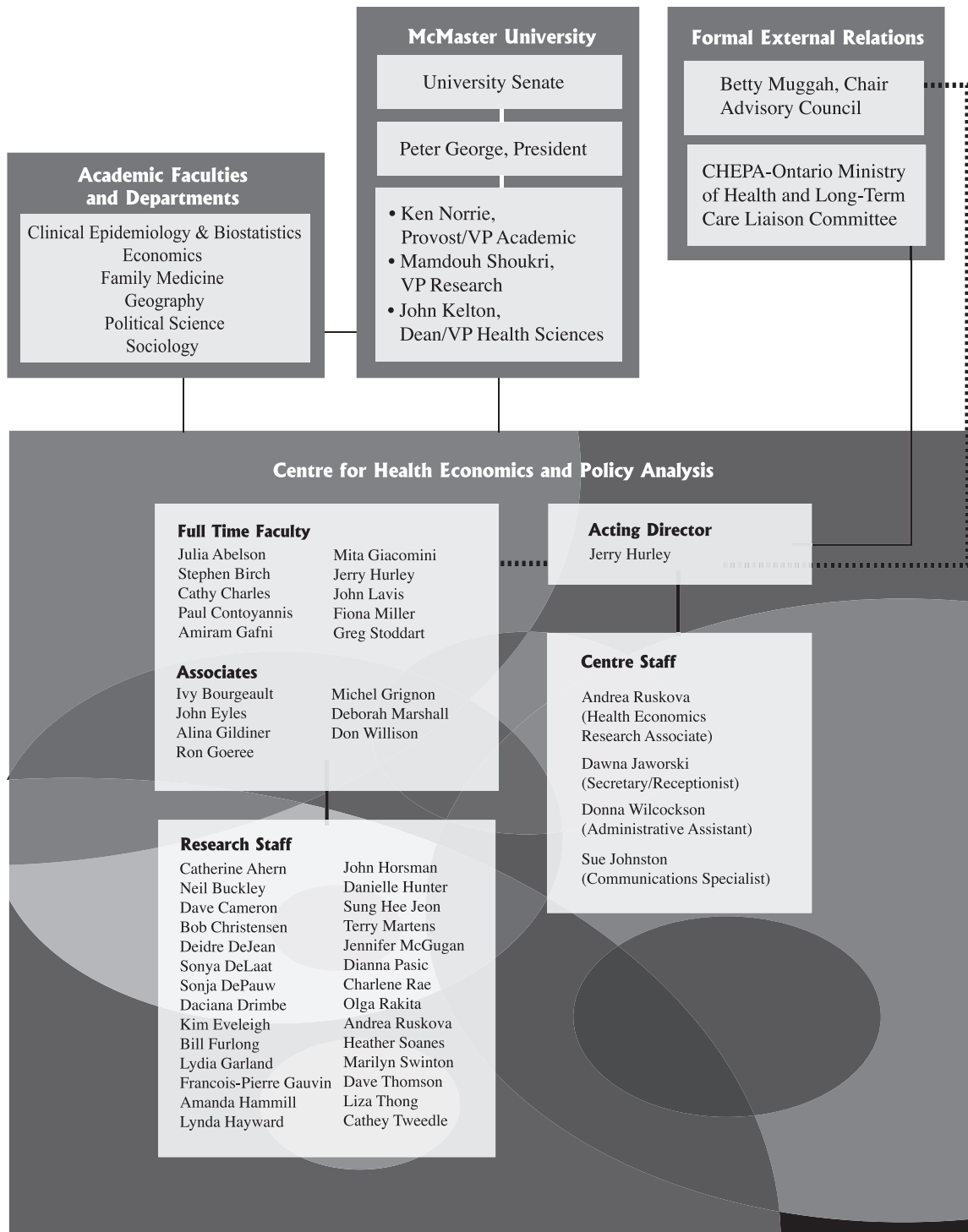
Goals

- To develop and apply methods to evaluate the costs, risks, benefits and utility of specific health interventions and of alternative allocations of health resources.
- To analyse and evaluate the effectiveness, efficiency and equity of systems of organization, governance, financing, funding, and delivery of health services.
- To develop, apply and evaluate methods for analysing the behaviour of the public, patients, providers, managers and other decision makers in health systems.
- To develop, apply, and evaluate methods to convey health information to the public, patients, providers, managers, funders and other decision-makers in health systems.
- To evaluate the role of health and social policy initiatives in addressing the determinants of, and alleviating inequalities in, the population's health.

Funding

Funding for the Centre is provided by McMaster University, the Ontario Ministry of Health and Long-Term Care, and other sources both within and outside the health sector. The Centre raises about one-third of its funding from non-Ministry, non-University sources.

Organizational Chart



— Reporting Relationship

..... Advisory Relationship

Julia Abelson is an associate professor in the Department of Clinical Epidemiology and Biostatistics, associate member of the Department of Political Science and a member of the Centre for Health Economics and Policy Analysis at McMaster University. She holds a Canadian Institutes of Health Research (CIHR) New Investigator Award and was a past recipient of an Ontario Ministry of Health and Long-Term Care Career Scientist Award. She obtained her M.Sc. in Health Policy and Management from the Harvard School of Public Health and her doctorate in social and policy sciences at the University of Bath, U.K. Her research interests include democratic participation in health system governance; the evaluation of innovations in the organization, funding and delivery of health services; and the analysis of the determinants of health policy decision-making. Through her research, education and service activities, Abelson works closely with decision-makers at provincial, regional and local government levels. In 2005-06 she was one of two Canadian Associates of the U.S.-based Commonwealth Fund Harkness Fellowship in Health Care Policy.

Stephen Birch is a professor in the Department of Clinical Epidemiology and Biostatistics and a member of CHEPA. He is a previous recipient of the Faculty of Health Sciences Rose Levy Rosenstadt Award and a research scholarship award under Health Canada's National Health Research and Development Program. He received his doctorate in economics at the University of York, U.K. His main research interests are in methods for economic evaluation of health interventions, equity in health care resource allocation and the relationship between health and environments. He is senior editor, health economics for Social Science and Medicine. He is a member of the Board of Directors for the Hamilton Niagara Haldimand Brant Local Health Integration Network. Birch also has academic appointments in the School of Medicine at the University of Manchester, U.K., and the Centre for Health Economics Research and Evaluation, at the University of Technology Sydney, Australia.

Ivy Lynn Bourgeault holds the Canada Research Chair (CRC) in Comparative Health Labour Policy, which she took up following the early completion of her CIHR New Investigator Award. She is an associate member of CHEPA, and an associate professor in the departments of sociology and health, aging and society at McMaster University. The focus of her CRC - a comparative examination of the migration of health care providers into and out of Canada, the U.S., the U.K., and Australia - evolves out of her CIHR study of the impact of gender and location on human resources decision-making in the key health care sectors of maternity, primary and mental health, in Canada and the U.S. Bourgeault is a member of the National Steering Committee on Rural and Remote Women's Health and of the Canadian Interdisciplinary Network for Complementary and Alternative Medicine Research. In addition to her research comparing health occupations, she also studies rural health care issues, with emphasis on women's health and health care, and health care providers' views of complementary and alternative medicine.

Cathy Charles is a professor in the Department of Clinical Epidemiology and Biostatistics, and a member of CHEPA at McMaster University. She is also an investigator in the Supportive Cancer Care Research Unit, which is co-sponsored by the Hamilton Regional Cancer Centre and McMaster University. Her research interests include: public and patient participation in health care and treatment decision-making, physician-patient communication, shared treatment decision-making, and the use of research information to improve decision-making in the clinical encounter. She is currently undertaking a variety of collaborative studies, both in Canada and internationally, in different clinical contexts on the above issues as well as developing conceptual papers to clarify thinking on essential research and practical issues in these areas.

Paul Contoyannis is an associate professor in the Department of Economics, a member of CHEPA, and an associate member of the Department of Clinical Epidemiology and Biostatistics. Prior to joining McMaster in February 2002, he was a research fellow at the University of York, U.K., where he worked on two Economic and Social Research Council projects on the analysis of longitudinal health data. His

PhD in Economics, obtained from the University of York in 2000, focused on the causes and consequences of inequalities in health, considering both theoretical and empirical issues relating to addiction, wages and income inequality. Other interests include the analysis of health dynamics and the determinants and effects of lifestyle, which leads to his main methodological interest: estimation and inference in complex microeconomic models. His research interests include determinants of health and health inequalities, models of addiction and intergenerational transmission of income and health inequality.

John Eyles is a social and policy scientist and a University Professor at McMaster University. He is a Fellow of the Royal Society of Canada, and a former director of the McMaster Institute of Environment and Health. He is also a professor of geography, a CHEPA associate and an associate in the departments of clinical epidemiology and biostatistics and sociology. He is author or co-author of some 200 books, peer-reviewed journal articles and technical reports in the health and social sciences fields. He has carried out work for national and provincial organizations and governments. For example, he has worked with the International Joint Commission, the Ontario ministries of Environment and Health, the Prince Edward Island Department of Health and Social Services, Ontario Hydro and the Canadian Chlorine Co-ordinating Committee. He serves on several expert panels, advisory committees and boards. His research interests include evaluation of health care systems and programs, the role of science and other factors in health and environment settings, and health and science policy.

Amiram Gafni is a professor in the Department of Clinical Epidemiology and Biostatistics and a member of CHEPA. He is also a research associate with the Research Institute for Quantitative Studies in Economics and Population, in the Faculty of Social Sciences at McMaster. His research interests are in the area of economic evaluation of health care programs (both methods development and empirical applications), modeling of consumers' health-care behaviour, models of patient-physician decision-making (e.g., shared decision-making), policy analysis and risk and decision analysis in health. He has been involved in research projects covering topics ranging from the care of premature babies to end of life care. He is involved in numerous ongoing research projects, including examining subjects related to cardiovascular disease, hypertension, HIV/AIDS, breast cancer, complex continuing care and patient values. Gafni has worked on the development of the healthy-years equivalent (HYE) preference-based measure of outcome for program evaluation, and the development of a bedside decision instrument, a method for helping patients to reveal their preferences regarding treatment.

Mita Giacomini is an associate professor in the Department of Clinical Epidemiology and Biostatistics at McMaster University, and a member of CHEPA. She holds graduate degrees in health services and policy analysis, history of medicine, and public health. Her publications have addressed topics including ethical and political reasoning in health technology assessment, health care rationing, interdisciplinarity in health research, the idea of "values" in Canadian policy rhetoric, and the clinical uses of qualitative evidence. Current research projects focus on argumentation and evidence in health technology coverage decisions, values and ethics in Canadian health policy, and life support technologies in intensive care. Giacomini has provided consultation and service to local, provincial, national and international health agencies in areas related to technology assessment and health policy. She is a member of the Ontario Health Technology Assessment Committee. Research interests include social and ethical dimensions of health technology assessment, health resource allocation, and ethics and values in health policy analysis.

Alina Gildiner is an associate member of CHEPA and an assistant professor in the Political Science Department and the Department of Health, Aging and Society at McMaster University. Gildiner trained as a physiotherapist, then later earned a PhD in Health Policy from the University of Toronto. Her research interests deal with the politics and meaning of privatization, particularly how historical legacies have shaped these and how they continue to change in new historical contexts. Empirical work to date has focused on the impact of the organization of policy decision-making on public-private change,

drawing largely on historical-institutionalist approaches. Other research interests include social and public policy in welfare states, the implications of social policy development and regimes in developed countries for those in developing countries, public and private insurance for health and disability and equity in the design of Canadian health policy.

Ron Goeree, the newest associate member of CHEPA, is an assistant professor in the department of Clinical Epidemiology and Biostatistics, and Director of the Program for Assessment of Technology in Health (PATH) at St. Joseph's Healthcare. PATH is an innovative program of research on the evaluation of new and existing health care technologies. This research fosters an evidence-based framework for assessing the value of new health technologies and builds valuable research partnerships between users, payers and researchers. Goeree has recently developed a new course in Advanced Decision Analytic Modelling. He is involved in numerous research projects for both the Ontario Ministry of Health and Long Term Care and the Canadian Agency for Drugs and Technologies in Health. He also has extensive experience as a consultant on research activities of government bodies, agencies and corporations. His research interests include health technology assessment, applied economic evaluation and development of new methods and techniques for economic appraisal.

Michel Grignon is an assistant professor in the Department of Economics and the Department of Health, Aging and Society at McMaster University, an associate member of CHEPA, and an adjunct scientist at the Institute for Work & Health in Toronto. Before joining McMaster in July 2004, he worked at the Institut de recherche et de documentation en économie de la santé (IRDES) in Paris, France. Grignon has extensive experience at an international level in research projects and activities in the areas of health economics, health-related policies, health insurance and aging. He is a member of the International Health Economics Association, the American Society for Health Economics, the Gerontological Society of America, and the Canadian Economics Association. His current research projects cover a broad range of topics, including how an aging society impacts health care expenditures in Canada and in France, and links between age and workplace absenteeism. He is also involved in research examining inequities in health care utilization and health policy in Canada.

Jeremiah Hurley is a professor in the Department of Economics, a member of CHEPA, and an associate member of the Department of Clinical Epidemiology and Biostatistics at McMaster University. He served as the Associate Co-ordinator of CHEPA from 1994-1996, as Co-ordinator from 1996 – 2000, and as Acting Director in 2001-2002 and 2005-06. Since coming to McMaster in 1988, he has carried out research on physician behaviour and physician payment systems; resource allocation and funding models for health care; financial incentives in health care systems; prescription drug programs; normative frameworks for evaluative economic analysis in the health sector; and public and private roles in health care financing. His current work focuses on public and private roles in health care financing, resource allocation in health care and needs-based capitation funding in health care. He has published in leading health economic and health services research journals and has acted as a consultant to regional, provincial, national and international agencies. He is currently a member of the Canadian Institute for Health Information's National Health Expenditures Database Expert Group.

John Lavis is the Canada Research Chair in Knowledge Transfer and Exchange, associate professor in the Department of Clinical Epidemiology and Biostatistics, and a member of CHEPA. He is also an associate member of the Department of Political Science at McMaster University. His principal research interests include knowledge transfer and exchange in public policy-making environments and the politics of healthcare systems. He directs the Program in Policy Decision-Making, a research program affiliated with CHEPA, and supervises the Knowledge Exchange Program of CHEPA. He is a member of the Scientific and Technical Advisory Committee for the Alliance for Health Policy and Systems Research, and co-chair of the Board of Directors of the AIDS Committee of Toronto. He was the Liberty Health

Scholar of the Canadian Institute for Advanced Research (1998-2003), inaugural Chair of the Canadian Institutes of Health Research (CIHR) Health Policy and Systems Management grants review committee (2000-2003), Visiting Researcher at the Institut de recherche et de documentation en économie de la santé (IRDES) in Paris, France (2003/04), and a member of the World Health Organization's Task Force on Health Systems Research (2004/05).

Deborah Marshall is an assistant professor in the Department of Clinical Epidemiology and Biostatistics and an associate member of CHEPA. She has a B.Sc. in Biochemistry (University of Toronto), a M.Sc. in Health Services Research (University of Alberta) and a PhD from the School of Public Health at the University of North Carolina, Chapel Hill. She has worked in numerous government, academic and industry research settings commissioning, conducting and authoring evaluations of various health technologies. Her research grants are focused in the area of measuring patient preferences in cancer. She is also the Vice President, Health Economics and Outcomes at i3 Innovus, where she has managed many health economic studies including international prospective pragmatic piggyback evaluations and decision analysis models for products in the areas of osteoarthritis, blood screening, infectious disease, cardiac disease and cancer.

Fiona Miller is an assistant professor in the Department of Clinical Epidemiology and Biostatistics and member of CHEPA. She holds a Career Scientist Award from the Ontario Ministry of Health and Long Term Care (MOHLTC) and has recently been awarded a New Investigator Award from CIHR. Miller's research focuses on genetic and genomic health services. She studies the social organization of medical genetics as a science and emerging health service, resource allocation and technology assessment in genetics, innovation creation in health biotechnology and ethical issues in genetic research and health care. Miller is also involved in policy development in these areas, through the Ontario Advisory Committee on Newborn and Childhood Screening, the Ontario Advisory Committee on Genetics, the Evaluation Subcommittee of the Provincial Implementation Committee for Predictive Cancer Genetics, and through consultations with various national and international groups.

Greg Stoddart is a professor in the Department of Clinical Epidemiology and Biostatistics, a member of CHEPA, and an Associate Member of the Department of Economics. His published work includes books, monographs, articles, and edited works on health-care financing, utilization analysis, human resource planning, alternative delivery modalities, methods and applications of economic evaluation of health services and social and economic determinants of health. His current research interests address topics from the economics of health care and of health, including the public-private mix in health care finance, and knowledge transfer to inform policy-making about health and health care. He has developed several new courses and programs during his 25-year teaching career at McMaster. He has served as a consultant to the World Health Organization, the World Bank, and several Canadian ministries of health and task forces at both the federal and provincial levels on a wide variety of health policy issues. Stoddart has received a number of academic awards including fellowships from the Woodrow Wilson National Fellowship Foundation, and the Canadian Institute for Advanced Research.

Don Willison is an assistant professor in the Department of Clinical Epidemiology and Biostatistics, an associate member of CHEPA, and a scientist with the Centre for Evaluation of Medicines. He combines training in pharmacy, (University of Toronto, 1977), Clinical Epidemiology and Biostatistics (M.Sc., McMaster University, 1984), and health services research (Sc.D., Harvard School of Public Health, 1996). His research interests include: balancing cost-containment and access to prescription pharmaceuticals with the promotion of drug research and development; the effects of policies to restrict drug reimbursement on drug utilization, cost shifting to non-drug services, and health outcomes; privacy and security enhancing technologies; public opinion on data privacy and health research; and the role and function of research ethics boards in addressing privacy and access to personal information for health research.

The members of CHEPA's Advisory Council represent key target audiences for CHEPA's research and leaders in the health sector in Canada. The Advisory Council and its members provide CHEPA with strategic advice, facilitate linkages with health decision-makers and stakeholders, and inform CHEPA's knowledge exchange activities.

Betty Muggah (Chair)
Vice-president
Grants and Community Initiatives
Hamilton Community Foundation

Terry Albert
Executive Director
Corporate Affairs
Canadian Medical Association

Bob Baldwin*
Director
Social and Economic Policy
Canadian Labour Congress

Lillian Bayne
Independent consultant in health policy, planning
and research
Lillian Bayne & Associates
BC Regional Officer, CHSRF

Charlyn Black
Director
Centre for Health Services and Policy Research
University of British Columbia

Sheree Davis
Executive Lead
Strategic Directions
Ministry of Health and Long-Term Care

Jeremiah Hurley
Acting Director, CHEPA
McMaster University

Shan Landry
Vice-president
Primary Health
Saskatoon Health Region

Ginette Lemire Rodger
Chief of Nursing
Ottawa Hospital

Mary Catherine Lindberg
Executive Director
Ontario Council of Teaching Hospitals

Sandra MacDonald-Rencz
Acting Executive Director
Office of Nursing Policy
Health Canada

Alison Pilla**
Executive Director
Integrated Policy and Planning Division
Ministry of Health and Long Term Care

Maureen A. Quigley
Health Strategies Facilitator and Advisor
Maureen Quigley and Associates Inc.

John Ronson,
Partner, Courtyard Group, a professional services
firm specializing in the health care field

Noralou P. Roos
Professor, Community Health Sciences, University
of Manitoba
Manitoba Centre for Health Policy
Canada Research Chair in Population Health

Ian Shugart***
Senior Assistant Deputy Minister
Health Policy Branch
Health Canada

* Bob Baldwin has retired from the Canadian Labour Congress

** Alison Pilla is now the Acting Assistant Deputy Minister, Integrated Policy and Planning Division, MOHLTC, and is no longer a member of the Advisory Council

*** Ian Shugart is now the chair of the Asia-Pacific Economic Cooperation (APEC) Health Task Force

Research



The results of research conducted by CHEPA faculty, associates and staff are published in a wide range of journals, books and other publications. One method of publishing is through the Working Papers Series, which provides a means to circulate polished, but not yet published reports of compiled research. The aim of the Working Papers is to stimulate discussion on analytical, methodological, and policy issues in health economics and health policy analysis. Working Papers are published on CHEPA's website, www.chepa.org. The most recent Working Papers are:

06-03 Grignon M.

The Role of Education in Health System Performance: A Propos World Health Report 2000.

06-02 Grignon M, Perronnin M, Lavis J.

Does free supplementary health insurance help the poor to access health care? Evidence from France.

06-01 Goldsmith LJ, Hutchison B, Hurley J.

Economic Evaluation Across the Four Faces of Prevention: A Canadian Perspective.

Examples of other work published by CHEPA researchers in 2005/06 include:

Birch S, Gafni A. Achievements and challenges of Medicare in Canada: Are we there yet? Are we on course? Published in *International Journal of Health Services* 2005; 35; 443-463.

Bourgeault I.L. Push! The Struggle for Midwifery in Ontario. An account and analysis of the first attempt to professionalize midwifery in Canada. 2006. Published by McGill-Queen's University Press.

Charles C, Gafni A, Whelan T. Treatment Decision Aids: Conceptual Issues and Future Directions. Published in *Health Expectations* 2005; 8:14-125.

Giacomini M. One of these things is not like the others: The idea of precedence in health technology assessment and coverage decisions. Published in *Milbank Quarterly*, 2005; 83 (2).

Lavis J, Davies HTO, Oxman A, Denis J-L, Golden-Biddle K, Ferlie E. Towards systematic reviews that inform healthcare management and policy-making. Published in *Journal of Health Services Research and Policy* 2005; 10 (supplement 1): 35-48.

Miller F, Ahern CM, Smith C, Harvey E. Understanding the new human genetics: a review of scientific editorials. Published in *Social Science and Medicine*, 2006, 62:2375-2385.

Stoddart G, Eyles J, Lavis J, Chaulk PC. Reallocating Resources across Public Sectors to Improve Population Health. Published in Heyman J, Hertzman C, Barer M, Evans B, editors. *Healthier Societies. From Analysis to Action*. 2006. Oxford University Press.

As part of its commitment to the Ontario Ministry of Health and Long Term Care, CHEPA conducts research that responds to specific health system management and policy priorities. The ministry-responsive projects that were worked on during the 2005/06 fiscal year include:

Costs of enrolling patients in primary care: This project involved studying the costs and effectiveness of different methods of approaching patients to enrol in primary care practices. A draft report, entitled *Economic Evaluation of Alternative Enrolment Methods for Primary Care Practices*, was presented in 2005, detailing the success rate and costs associated with different methods used to enrol patients. The methods included asking patients to enrol during visits to their doctor's office, mailings of different information packages with requests to enrol, and follow-up telephone reminders to some of the non-respondents. This research is important for planning the implementation of primary care renewal in Ontario, as most models of primary health care being considered require or encourage formal patient enrolment.

Capitation payments: In the Needs-Adjusted Primary Care Capitation Payment project, CHEPA researchers examine whether factors beyond age and gender should be used in a new capitation payment model for primary health care. Demographic, health status and socioeconomic characteristics of individuals, as well as the social and health status specific to local regions, were gathered and studied to determine their impact on utilization of health care services. A draft report has been submitted to the ministry.

Funding models of primary care: CHEPA was asked by the ministry to conduct a review of published and grey literature, as well as a policy analysis, on funding models for interdisciplinary primary health care. A draft discussion paper on the results is now being prepared. The results will inform decisions about future payment arrangements for Family Health Teams.

Literature review on economic evaluation of early hospital discharge/clinical pathways: Using congestive heart failure, chronic obstructive lung disease and hip/knee replacement as the focus, this project will examine existing literature to estimate the economic impact of early discharge from hospital and the subsequent clinical pathways.

Knowledge Exchange



Over the last few years, Knowledge Exchange has evolved into an explicit function for many Canadian health research organizations, including CHEPA. CHEPA's John Lavis, who holds a Canada Research Chair in Knowledge Transfer and Exchange, defines knowledge transfer as:

A process by which relevant research is made available and accessible for application in practice, planning and policy-making – preferably through interactive engagement with decision-makers and supported by both user-friendly materials and a communications strategy that enhances the credibility of the organization and, where relevant, reinforces key messages from the research.

In keeping with CHEPA's commitment to support better decision-making by facilitating the transfer of research findings to decision makers, the Knowledge Exchange program strives to develop and apply strategies for ensuring the relevant knowledge is accessible and useful to public policy makers, managers, researchers and other stakeholder groups.

These strategies include a website, electronic newsletter, regular seminars and the annual Labelle Lecture.

Website & Newsletter

The CHEPA website can be found at www.chepa.org and serves as a gateway to CHEPA research and activities. On the site you can find information on CHEPA-related workshops, Working Papers, advance notice of seminars and lectures, contact details and profiles for faculty, and information on courses taught by CHEPA faculty. Application forms and information on student awards and fellowships are also available. There is also a searchable literature database that provides a list of publications by CHEPA faculty and associates, and can be searched by author or topic.

Although the electronic newsletter was on hiatus for 2005/06, earlier editions of it are available through the site. The newsletters highlight new publications by CHEPA researchers, Working Papers, information on Canadian conferences and awards, and notice of seminars, lectures and workshops. The newsletter will resume publication in 2006.

Throughout each academic year, CHEPA has an invited speaker present a seminar at least once a month, most often on the third Wednesday. The series attracts attention from a large audience, drawn from both the University and the wider community interested in health and health care issues. During the 2005-2006 academic year, CHEPA hosted 12 seminar speakers. Advance notice of presentations are published on the CHEPA website.

2005-2006 Academic Year Speakers

U.K. Primary Care: Sitting at the Crossroads

Stephen Peckham, Senior Lecturer, London School of Hygiene and Tropical Medicine, London, England

An Explanatory Framework for Municipal Policy-Making: Tobacco Control as a Case Study

Sharon Campbell, Associate Professor, Research, University of Waterloo and Director, Centre for Behavioural Research and Program Evaluation

Equity in Health Status and Health Care Services Use in British Columbia, 1992 and 2002

Kim McGrail, PhD Candidate, Centre for Health Services and Policy Research, University of British Columbia

Canada's Natural Health Products Regulations: How are they affecting Canadians?

Heather Boon, Assistant Professor, Leslie Dan Faculty of Pharmacy, University of Toronto

Prenatal HIV Testing In Ontario: Challenges in Practice and Ethics in Ontario and Abroad

Dale Guenter, Associate Professor, Department of Family Medicine, McMaster University

It's About Time: Women Defined Quality of Care

Pat Armstrong, Professor, Department of Sociology, York University

How Far to the Hospital? The Effect of Hospital Closures on Access to Care

Thomas C. Buchmueller, Professor of Economics and Public Policy, University of California's Paul Merage School of Business

More Questions Than Answers: The Complexity of Professional Behaviour Change

Jeremy Grimshaw, Director, Clinical Epidemiology Program, Ottawa Health Research Institute, University of Ottawa

Are Canadians 'Free Riders' on American Research and Consumers?

Donald W. Light, Professor of Comparative Health Care Systems, University of Medicine and Dentistry of New Jersey

The Individual and Social Valuation of Health

Paul Dolan, Director, Centre for Well-being in Public Policy; Professor of Economics, University of Sheffield, Sheffield, England

Men, Masculinities and Health

Blye Frank, Professor, Division of Medical Education and Director, Faculty Development, Faculty of Medicine, Dalhousie University

Knowledge Transfer and Exchange in Health System Reform: An Insider's View of the US Veteran Health Administration

Carol Ashton, Director, Houston Center for Quality of Care and Utilization Studies, Michael E. DeBaakey VA Medical Center, Houston, Texas

Roberta Labelle was a founding member of CHEPA. Her death in 1991 was unexpected and occurred when broad recognition for her research in health economics was just starting to emerge. In her memory, CHEPA and the Department of Clinical Epidemiology and Biostatistics collaborated on establishing the Annual Labelle Lectureship Series. Each year, usually in the third week of October, a health services researcher with emerging recognition and an interdisciplinary approach to research gives a general interest lecture on a topic in the broadly defined areas of health economics and/or health policy. The Labelle Lecturer is also available for consultations with individuals in and outside McMaster University during the period of their visit. An endowment was established to assure the ongoing funding of the Lectureship.

Health and Global Health Governance: What's Justice Got to do With It?

2005 Labelle Lecture: October 19, 2005

Jennifer Prah Ruger, Assistant Professor, Division of Global Health, Yale School of Public Health

Five years into the new millennium, the health of the world's citizens is remarkably uneven. A child born today in Japan, for example, can expect to live to age 82 on average, while it is unlikely that a newborn infant in Zimbabwe will reach his or her 34th birthday. Over several decades, scientific progress has expanded our ability to improve human health, and many regions of the world have achieved significant health gains. Yet extreme deprivation in health is still widespread. This paradox of significant health improvement in the midst of deprivation is one of the greatest global challenges of the new millennium.

Jennifer Prah Ruger's lecture briefly described some traditional philosophies of justice and health care, then offered an alternative view of justice and health that draws from Amartya Sen's capability approach and Aristotle's political theory. She discussed the policy implications of this approach for global health governance focused on health improvement strategies for state and non-state actors world-wide, including, for example, national governments, international and domestic markets, pharmaceutical companies, and international organizations such as the World Health Organization, the World Bank, and the Gates and Rockefeller foundations.

Ruger's research interests focus on the political economy of health and include the economic evaluation of addiction programs and emergency and humanitarian services; health, health systems and development; and health and social justice. She earned a master's degree from Oxford University, and a doctoral degree from Harvard University (with Nobel laureate Amartya Sen as her supervisor). Following a post-doctoral fellowship at Harvard's Center for Population and Development Studies, she served on the health and development satellite secretariat of World Health Organization (WHO) Director-General Gro Harlem Brundtland's Transition Team, and co-authored a WHO report that examined the microeconomic and macroeconomic linkages between health and development. She has also worked as a health economist at the World Bank, where she co-authored a World Bank health care financing paper for the Government of Morocco, and helped co-ordinate a Government of Morocco/World Bank Symposium on health care financing. Also at the World Bank, she served as special assistant and speechwriter to President James D. Wolfensohn. She has received a career development award from the National Institute on Drug Abuse to study economic evaluations of addiction services.

Discussant for the Labelle lecture was Ronald Labonte, Canada Research Chair, Globalization/Health Equity, Institute of Population Health, and a professor in the Department of Epidemiology and Community Medicine, Faculty of Medicine, University of Ottawa.

Education



Reflecting the commitment of its members to education and training, the Centre for Health Economics and Policy Analysis has maintained and strengthened its already substantial contributions to education in health economics and policy analysis at all levels.

Undergraduate

CHEPA faculty participate in undergraduate education in a number of programs across the Faculties of Social Science, Health Sciences and Science, including health professional training programs for MDs, nurses, midwives, physiotherapists and occupational therapists. For information on undergraduate courses and programs taught by CHEPA faculty, visit the McMaster Undergraduate website at <http://registrar.mcmaster.ca/external/>

Graduate and Post-Graduate

CHEPA faculty participate as course co-ordinators and instructors, thesis supervisors and academic advisors to master's and doctoral students in economics, geography, health research methodology, nursing, political science and sociology, and in the MBA program's health services management stream. For more information on graduate courses and programs, please visit the McMaster School of Graduate Studies website at www.mcmaster.ca/graduate/

Polinomics

Named after a quirky merging of the terms health policy and economics, Polinomics is a monthly seminar attended by individuals representing a wide range of disciplines from McMaster, and occasionally from outside universities and organizations. Individuals join for the academic year to present their work (grant proposals, papers ready for submission, etc.) and to provide written feedback to other participants. For more information on Polinomics, please e-mail Donna Wilcockson at wilcocks@mcmaster.ca

CHEPA Studentship

The Studentship Award provides McMaster University students who are enrolled in a graduate program and have an interest in health economics and/or health policy analysis, with an opportunity to gain research experience and skills in an interdisciplinary environment. Students can either work on their own projects or on ongoing projects run at the Centre or by its faculty. The amount of the award is \$8,000, consisting of a stipend of \$6,000 and up to \$2,000 for research expenses, books and travel to a conference to present research results.

2005/2006 Academic Year Studentship Recipient

Patricia Khokher is a PhD student in the Department of Sociology at McMaster University. Under the supervision of CHEPA associate member Ivy Bourgeault, her project focuses on the work culture in the hospital setting. Specifically, the research explores the relationships between health care providers, their patients, and the hospital as an organization. She is conducting in-depth interviews with a variety of hospital workers (physicians, nurses and aides) in four units (Intensive Care Unit, Emergency Medicine, Maternity Care Suite and Chest, Head, and Neck Unit) in order to understand workers' views and experiences within their respective hospital units. The insights garnered from this study will be of critical importance to health care providers. It will aid in the development of effective policies to create more positive health care workplaces, which may help prevent burnout, high turnover, and some of the predicted shortages.

CHEPA Fellowship

The CHEPA Doctoral Fellowship is intended to provide income support for graduate students enrolled in a PhD program at McMaster University, whose field of research is health economics or health policy analysis. Candidates must be entering their first year of doctoral study at McMaster, be supervised by a CHEPA faculty member, and be nominated by the chair of their graduate program. The award carries an annual stipend of \$16,000.

2005/2006 Academic Year Doctoral Fellowships

G. Emmanuel Guindon is a PhD student in the Department of Economics at McMaster University. He has a keen interest in the health systems of developing countries. Under the supervision of Michel Grignon, he is exploring empirical issues related to access to health services and the demand for tobacco products in Vietnam. Guindon previously spent seven years at the World Health Organization in Geneva. As a member of the Tobacco Free Initiative, he conducted research in the area of the economics of tobacco control. More recently, he has been co-ordinating, in collaboration with Dr. John Lavis, a multi-country project that seeks to examine the factors that explain how, and to what extent, researchers and health care providers utilize research evidence.

Amanda Hammill is a PhD student in the Health Research Methodology Program at McMaster University. Understanding how evidence is used by various participants within the policy-making process to influence social change is one of her key areas of interest. In her continuing role as a research co-ordinator for Dr. John Lavis, Director of the Program in Policy Decision Making, her research interests expanded to include the influence of health service research on public policy decisions related to health human resources. Her doctoral work will be focused on knowledge transfer and exchange in this domain, and will concurrently explore the use of elite interviews as a methodology for studying public policy decision-making. Her experience as a sessional lecturer in Gerontology at McMaster, with a focus on communication and counselling with older adults, and her background in social work, with a focus on addictions and mental health, give her a unique understanding of the importance of policy decisions.



1200 Main Street West,
McMaster University, HSC-3H1,
Hamilton, Ontario, Canada L8N 3Z5

T: 905-525-9140 ext.22122
F: 905-546-5211

chepa@mcmaster.ca
www.chepa.org